

# Hahndorf Township Improvements and Access Upgrade

## Project Update - Removal of large trucks from Hahndorf

**Large trucks will be restricted from Hahndorf, removing around 130 heavy vehicles a day from the Main Street.**

**The restriction will be implemented from Monday, 30 October 2023, and will apply to semi-trailers and truck and trailer combinations over 15 metres in length that do not have a destination in Hahndorf.**

Thank you to those members of the local community who provided feedback on the elements of the approved solution for Hahndorf Township Improvements and Access Upgrade announced in September 2022.

Through our previous engagement, we understand the importance of removing unnecessary trucks from the Main Street. So far there hasn't been local agreement on how this should be done, with all previous options proposed raising concern due to the impacts on local properties and the amenity of the area.

This large truck restriction is a regulatory solution to reduce the number of large trucks travelling on the Main Street, without the need

for further significant infrastructure and property acquisition.

Exemptions apply to drivers taking freight to or from Hahndorf businesses, or other destinations, they cannot reach by any other route.

There will be no planned changes to bus services as part of this initiative.

This solution is planned to work in conjunction with the measures already announced, including an upgrade to deliver a full interchange at Verdun, and a major upgrade at the Mount Barker Interchange.

These two interchange upgrades would remove up to a further 940 cars and smaller trucks each day from the Main Street.

### What happens next?

The Department will work with Councils and industry to identify appropriate locations for the signs.

Signs that say 'No Trucks Over 15m In Length' will be installed to alert drivers to the changed entry rules. In addition, advance notice signage will also be installed along the broader road network.

[dit.sa.gov.au](https://dit.sa.gov.au)

Follow us on:    



Australian Government

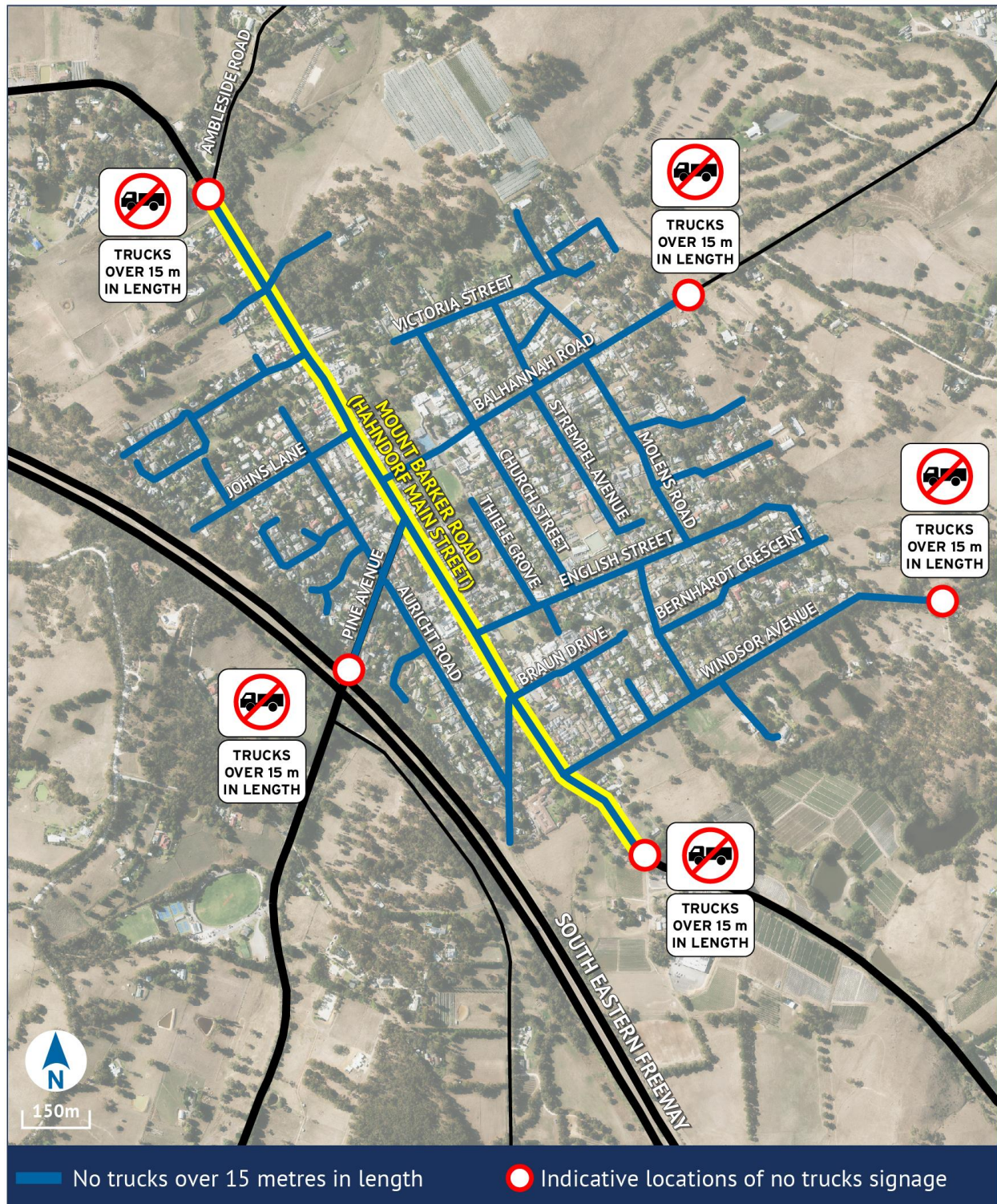


Government of South Australia

Department for Infrastructure and Transport



A map of the area showing the large truck restriction area, and indicative location of regulatory signs is provided below.



## Alternate routes

Drivers with no business in the township will need to determine an alternate route.

The road network in the broader Adelaide Hills area provides multiple opportunities for truck drivers to choose the best route that suits their vehicle.

The origin and destination of the truck journey will determine the route they choose to take. For example, some drivers may choose to go around Hahndorf via Strathalbyn Road, Onkaparinga Valley Road, Flaxley Road, Junction Road, River Road, Mount Barker Road or via the South Eastern Freeway.

## Road upgrades

To further improve road safety in the Adelaide Hills, improvements will be made to River Road, Hahndorf including tree trimming, targeted shoulder sealing, and minor intersection improvements at Kangaroo Reef Road, Sawmill Gully Road and Fairview Road.

In addition, improvements at the junctions of Strathalbyn Road/River Road and Mount Barker Road/River Road are planned, along with minor works such as targeted shoulder sealing and tree trimming at locations along Strathalbyn Road.

Further speed limit reductions are also being considered to complement safety enhancements in the area.

## Ongoing monitoring

The restriction will be monitored to assess its impact. The Department will continue to consider other longer-term solutions to address broader traffic issues in Hahndorf.

## More information

If you have any questions about the project, please don't hesitate to get in contact with the project team.

Or to stay up to date, register for project updates by visiting [dit.sa.gov.au/hahndorf](https://dit.sa.gov.au/hahndorf)

Call 1300 794 880

Email [dit.hahndorfproject@sa.gov.au](mailto:dit.hahndorfproject@sa.gov.au)

Visit our website [dit.sa.gov.au/hahndorf](https://dit.sa.gov.au/hahndorf)

The Department is not changing the classification of any roads, other than updating the PBS1A classification in Hahndorf, to include a note on the new restriction.

This will be reflected on RAVNET, the on-line tool used by Heavy Vehicle Operators to plan their route.

#20587566

[dit.sa.gov.au](https://dit.sa.gov.au)

Follow us on:    



Australian Government



Government  
of South Australia

Department for Infrastructure  
and Transport