

# WHEEL CHOCK SIZING GUIDE



## WHEEL CHOCK – SIZE 1.5

FOR TYRE SIZE: 400mm - 800mm Dia

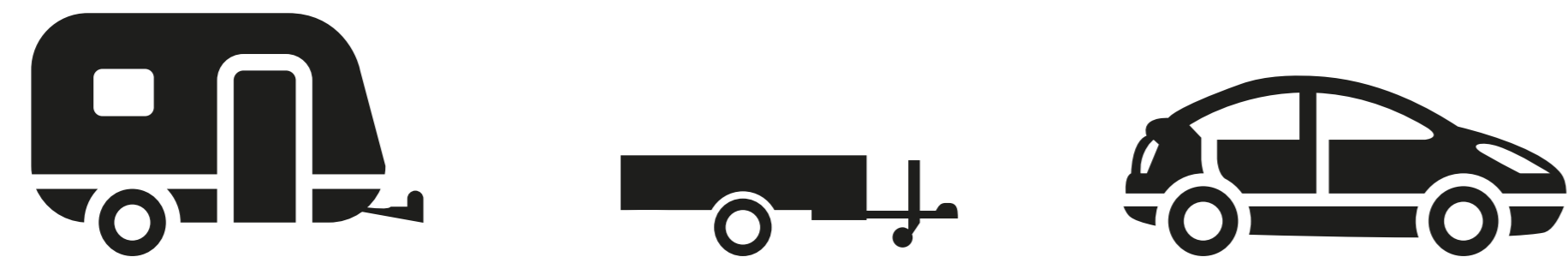
DIMENSIONS: 180mm L x 115mm W x 100mm H

WEIGHT: 1kg

PRODUCT CODE: SWC101.5

## WILL SUIT (BUT NOT LIMITED TO)

- ✓ Light motor vehicles
- ✓ Caravans
- ✓ Trailers



## WHEEL CHOCK – SIZE 2

FOR TYRE SIZE: 400mm - 800mm Dia

DIMENSIONS: 210mm L x 200mm W x 150mm H

WEIGHT: 1.6kg

PRODUCT CODE: SWC102

## WILL SUIT (BUT NOT LIMITED TO)

- ✓ Light commercial vehicles:  
Ford (Ranger, F-Series),  
Holden (Rodeo, Colorado),  
Mitsubishi (Triton),  
Nissan (Navara, Patrol),  
Toyota (Hilux, LandCruiser)



## WHEEL CHOCK – SIZE 3

FOR TYRE SIZE: 900mm - 1400mm Dia

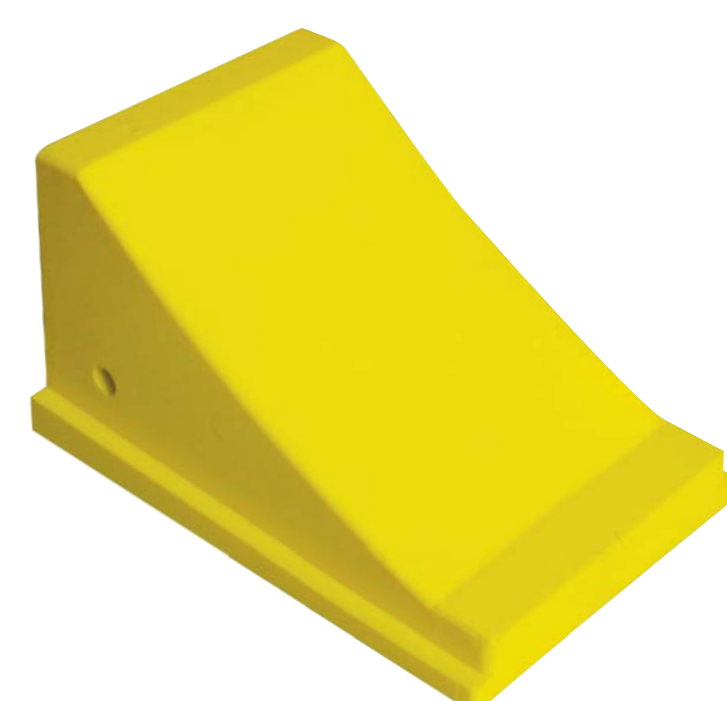
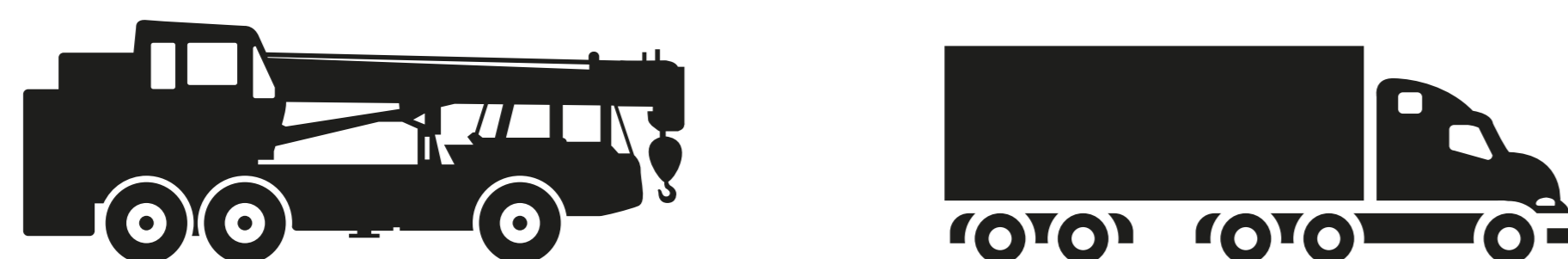
DIMENSIONS: 340mm L x 220mm W x 200mm H

WEIGHT: 3.5kg

PRODUCT CODE: SWC103

## WILL SUIT (BUT NOT LIMITED TO)

- ✓ All highway trucks:  
Mack, Kenworth, Isuzu, etc.
- ✓ Service trucks:  
Franna Cranes,  
Caterpillar Forklift (DP150 & DP18N)



## WHEEL CHOCK – SIZE 3.5

FOR TYRE SIZE: 1200mm - 1800mm Dia

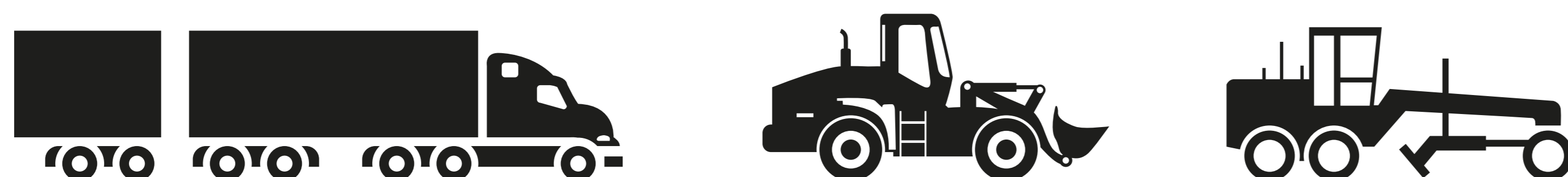
DIMENSIONS: 340mm L x 250mm W x 225mm H

WEIGHT: 6.2kg

PRODUCT CODE: SWC103.5

## WILL SUIT (BUT NOT LIMITED TO)

- ✓ Caterpillar Grader (14H, 16G, 16H, 24H, 24M)
- ✓ Caterpillar Loader (938, 950, 980)
- ✓ All highway trucks:  
Mack, Kenworth, Isuzu, etc.



## WHEEL CHOCK – SIZE 3.7

FOR TYRE SIZE: 1200mm - 2200mm Dia

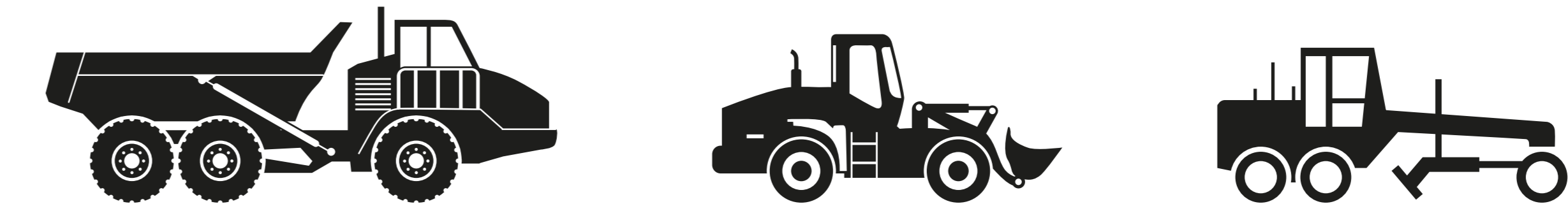
DIMENSIONS: 475mm L x 305mm W x 225mm H

WEIGHT: 6.0kg

PRODUCT CODE: SWC103.7

## WILL SUIT (BUT NOT LIMITED TO)

- ✓ Caterpillar Grader (14H, 16G, 16H, 24H, 24M)
- ✓ Caterpillar Loader (938, 950, 980)
- ✓ Caterpillar Dump Truck (740, 769, 773)
- ✓ Caterpillar Tool Carrier (IT 28)
- ✓ Komatsu (WA600)



## WHEEL CHOCK – SIZE 4

FOR TYRE SIZE: 1800mm - 3000mm Dia

DIMENSIONS: 570mm L x 340mm W x 280mm H

WEIGHT: 9kg

PRODUCT CODE: SWC104

## WILL SUIT (BUT NOT LIMITED TO)

- ✓ Caterpillar Dump Truck (777, 785)
- ✓ Komatsu Dump Truck (730E)
- ✓ Caterpillar Loader (988, 992)
- ✓ Caterpillar Scraper (631G, 621 & 623, 657F)



## WHEEL CHOCK – SIZE 6

FOR TYRE SIZE: 2800mm - 4200mm Dia

DIMENSIONS: 680mm L x 340mm W x 355mm H

WEIGHT: 14kg

PRODUCT CODE: SWC106

## WILL SUIT (BUT NOT LIMITED TO)

- ✓ Caterpillar Dump Truck (789, 797, 793C)
- ✓ Komatsu Dump Truck (830E, 930E)
- ✓ Liebherr Dump Truck (T282)
- ✓ Caterpillar Loader (994, 993K, 992, 854)
- ✓ Komatsu (1200)



## HAVE YOU GOT IT RIGHT?

### Make the right choice.

- Is the chock you chose going to stop that machine?

### Conduct your vehicle Pre-Start:

- Is the correct wheel chock available for use?
- Is the vehicle parked safely in an approved location?
- Can you safely move the required chock into position manually?
- If the machine is disabled, is it at risk of movement prior and during chock placement?

**For uncontrolled movement – where would vehicle go?**

**Minimum of 2 wheel chocks must be used at all times!**