

▶ metropolitan adelaide region

road safety 2020 : a safer tomorrow starts today

▶ the metropolitan adelaide includes the following local government areas

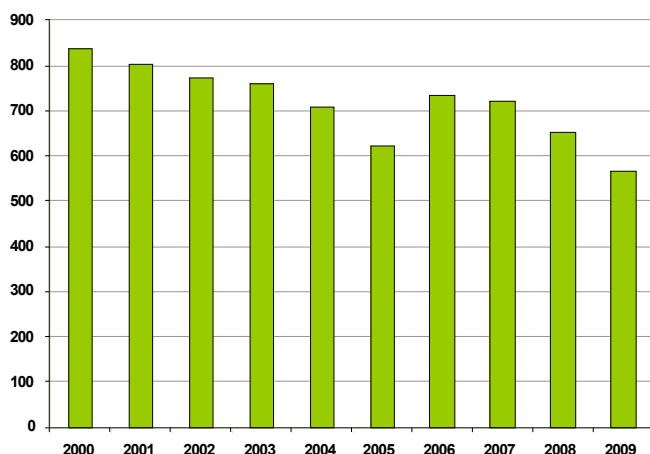
- Adelaide City Council
- The City of Burnside
- Campbelltown City Council
- City of Charles Sturt
- City of Holdfast Bay
- City of Marion
- City of Mitcham
- City of Norwood, Payneham & St Peters
- City of Onkaparinga
- City of Playford
- City of Port Adelaide Enfield
- City of Prospect
- City of Salisbury
- City of Tea Tree Gully
- City of Unley
- The Corporation of the Town of Walkerville
- City of West Torrens

▶ fast facts

The metropolitan Adelaide accounts for:

- **70%** of the population
- **38%** of fatalities
- **48%** of serious injuries

number of fatalities and serious injuries 2000 – 2009



▶ how many road fatalities and serious injuries occur?

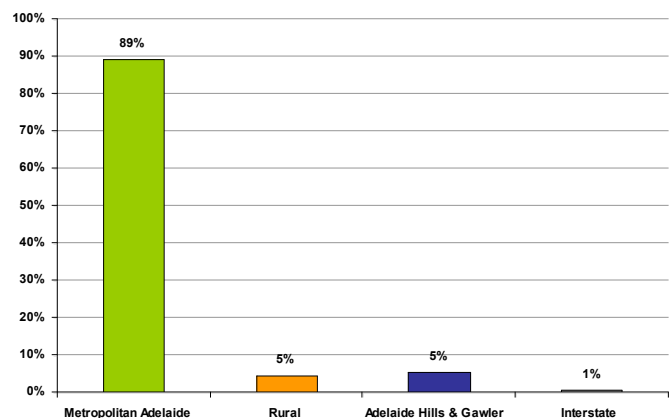
The number of fatalities and serious injuries in the Metropolitan area has fluctuated between 569 and 840 in the last decade - how many are we prepared to accept in the future?

▶ where do the injured come from?

Local residents often become complacent to the road conditions, traffic and speed limit when driving on familiar roads. The majority of drivers and riders killed or injured in the metropolitan Adelaide area were residents of the area.

While we all try and drive safely, making errors is inevitable. Even if we are familiar with the road, we can still be momentarily distracted, take our eyes off the road or misjudge a gap in traffic. A simple error is often the reason for crashes on our roads.

residence of driver and rider fatalities and serious injuries 2000 - 2009



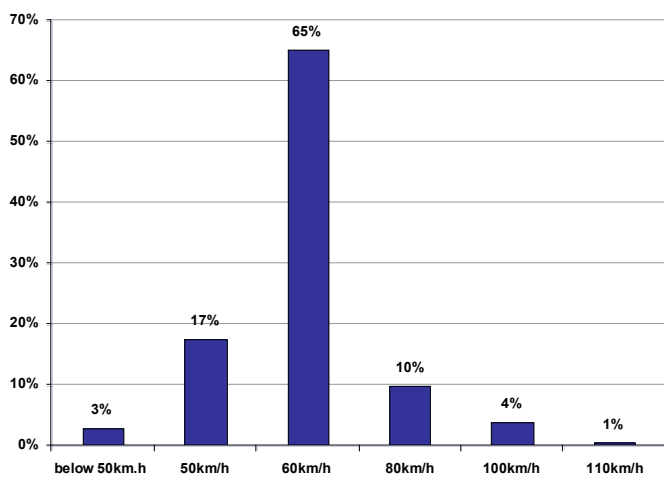
▶ on what type of roads do the crashes occur?

The majority of fatal and serious injury crashes that have occurred in metropolitan Adelaide in the last decade are on roads with a speed limit of 60km/h. This is to be expected since a lot of travel in the area is on roads with a speed limit of 60km/h.

▶ can you imagine a future where no deaths or serious injuries occur on our roads?

Compliance with the speed limit is important because we know that even small reductions in average travelling speeds results in large reductions in death and injuries. It is also important that speed limits match the qualities of the road to reduce the severity of injury in case a crash occurs. For example, minor residential streets should have lower speed limits than main roads with medians and clearways.

casualty crashes by speed limit of road 2000 – 2009

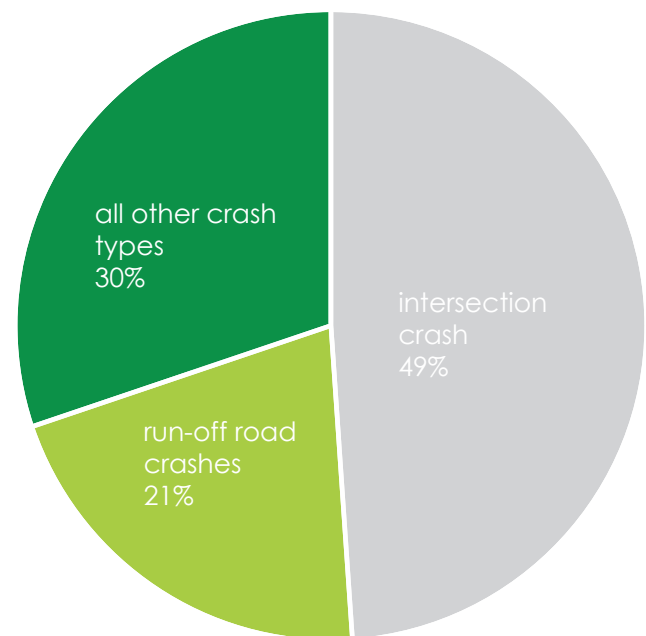


▶ what are the main crash types?

The most prevalent fatal and serious injury crash types in metropolitan Adelaide occur at intersections. Run off road crashes also occur but are less common and involve single vehicles running off the road, rolling over or striking trees or poles.

By identifying particular crash types we can try and make improvements to the road system to prevent crashes or if a crash does occur, the outcomes are less severe. For example, using right turn arrows at signalised intersections has the potential to reduce crashes at those locations by 45%.

number of fatal and serious crashes by crash type 2000-2009



*all other crash types include those hitting pedestrians, animals, objects on road and parked vehicles as well as head on and side swipe collisions between vehicles.

To find out more about events and updates, road safety information and links to road safety research please visit www.dtei.sa.gov.au/roadsafety

▶ road safety advisory council

An initiative of the Road Safety Advisory Council, responsible for recommending road safety solutions to the Minister for Road Safety and the Government of South Australia, and includes members of the following organisations:



Government of South Australia representatives include the Department for Transport, Energy and Infrastructure, Department of Education and Children's Services and SA Health.