



CONCEPT ONLY

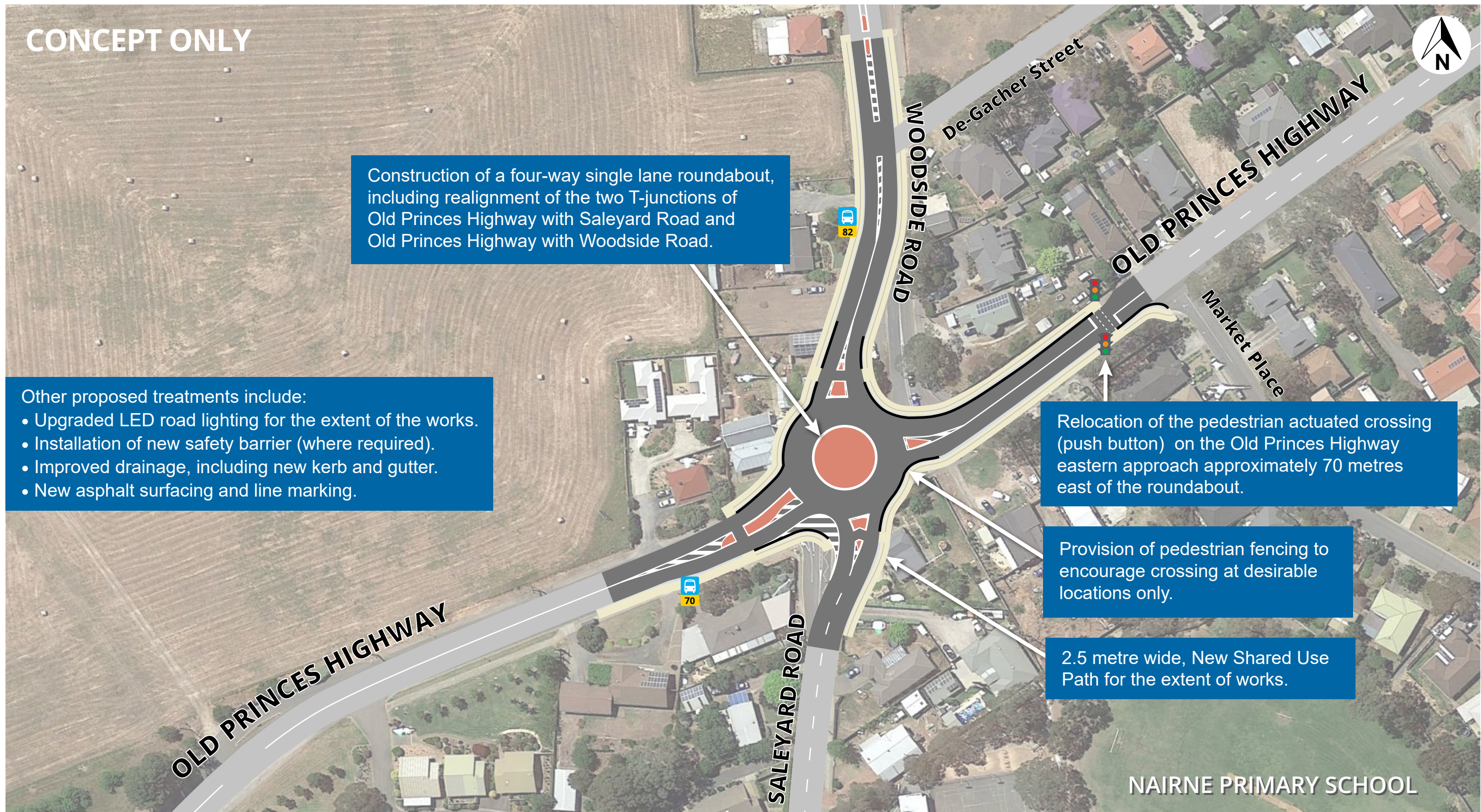
Construction of a four-way single lane roundabout, including realignment of the two T-junctions of Old Princes Highway with Saleyard Road and Old Princes Highway with Woodside Road.

- Other proposed treatments include:
- Upgraded LED road lighting for the extent of the works.
 - Installation of new safety barrier (where required).
 - Improved drainage, including new kerb and gutter.
 - New asphalt surfacing and line marking.

Relocation of the pedestrian actuated crossing (push button) on the Old Princes Highway eastern approach approximately 70 metres east of the roundabout.

Provision of pedestrian fencing to encourage crossing at desirable locations only.

2.5 metre wide, New Shared Use Path for the extent of works.



www.dit.sa.gov.au
dit.communityrelations@sa.gov.au
1300 794 880

Follow us on:



Government of South Australia



BUILDING WHAT MATTERS