

# Gurra Gurra Bridge and Murray Flood Plain Bridges Repairs

## River Murray Flood Recovery Works

### We are undertaking repair works on bridges that were impacted by the River Murray floods

These works form part of an overall \$40 million plan funded by the State Government to repair transport infrastructure impacted by the River Murray floods.

### What's happening

We are undertaking repair works on the Gurra Gurra Creek Bridge, located on Bookpurnong Road, and on the River Murray Flood Plain Bridges, located on Sturt Highway between Renmark and Paringa. See map overleaf for more information.

These works include scour repair to impacted piers on the underside of the bridges.

Early works and site establishment are expected to commence from Monday 14 July 2025, with major works to follow. All works are expected to be completed in late 2025, weather permitting.

### How this affects you

To keep everyone safe, speed restrictions will be in place during working hours. Some lane restrictions may be required at times as works progress, with advance notice provided via onsite signage. Please observe signage and follow traffic management directions while works are in progress.

Outside of working hours, speed and lane restrictions will be removed and traffic will return to normal.

Floating barriers will be installed within the Gurra Gurra Creek water course to identify and isolate the work zone. The adjacent bridge spans will remain open for recreational waterway users.

#### When

Monday 14 July 2025 to late 2025, weather permitting

#### Hours of work

Monday to Friday  
Between the hours of  
7am and 5pm

#### Where

Gurra Gurra Creek Bridge,  
Bookpurnong Road.

River Murray Flood Plain  
Bridges, Sturt Highway -  
between Renmark and Paringa.

#### More information

Email [dit.engagement@sa.gov.au](mailto:dit.engagement@sa.gov.au)

Call 1300 794 880



Ensuring long term sustainability of critical infrastructure



Repairing structures impacted by the River Murray Floods



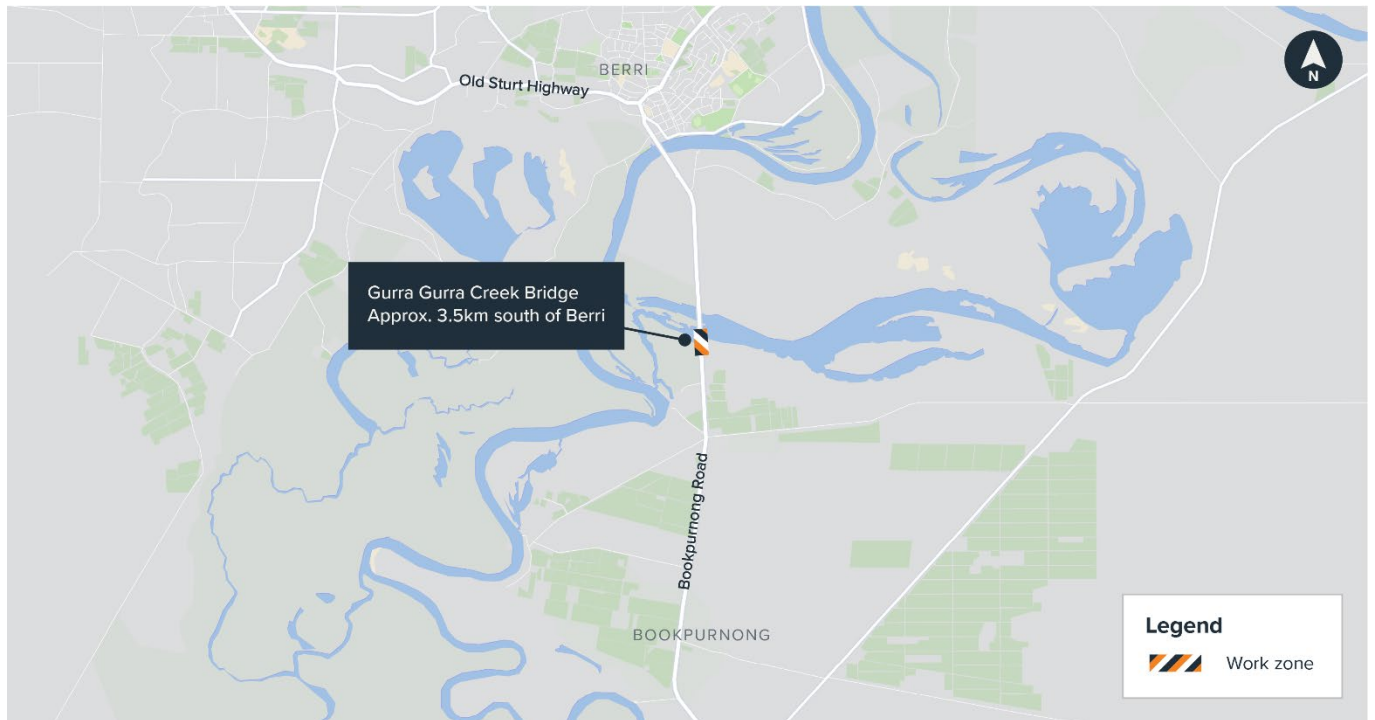
Forms part of the River Murray Flood Recovery Program



Government  
of South Australia  
Department for Infrastructure  
and Transport

**SA IS  
BUILDING**  
➔

## Gurra Gurra Creek Bridge – location map



## River Murray Flood Plain Bridges – location map

