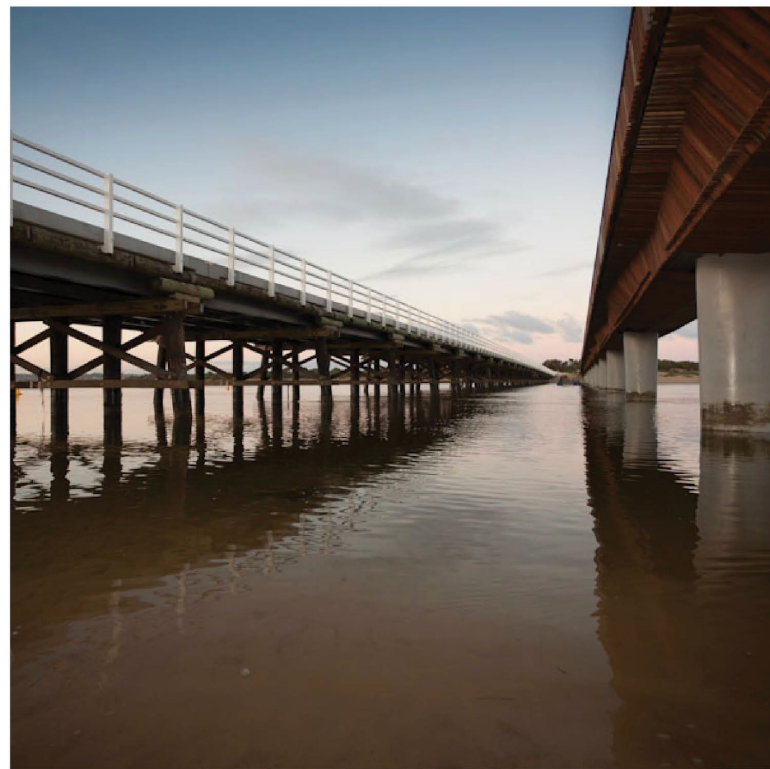
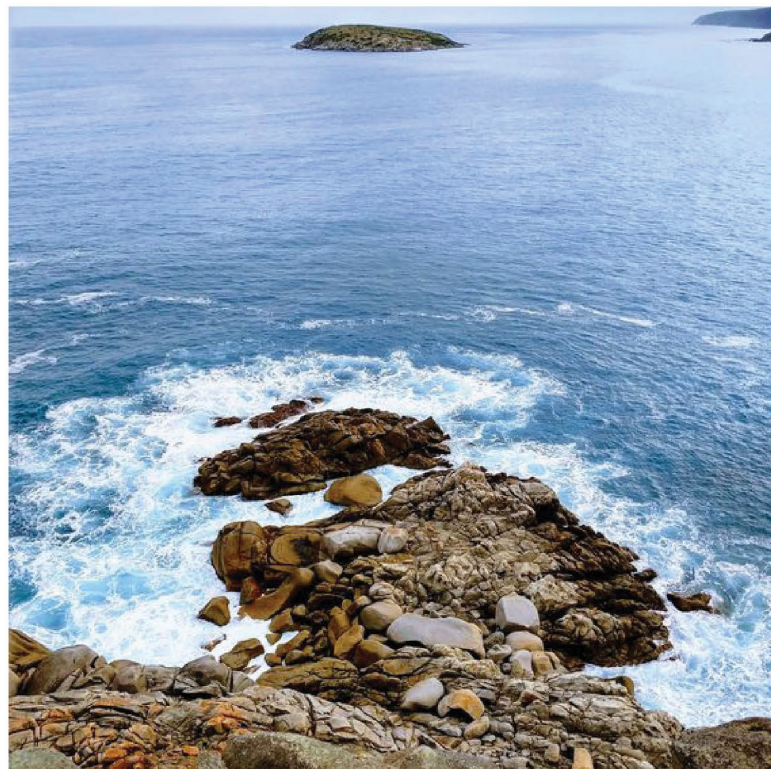
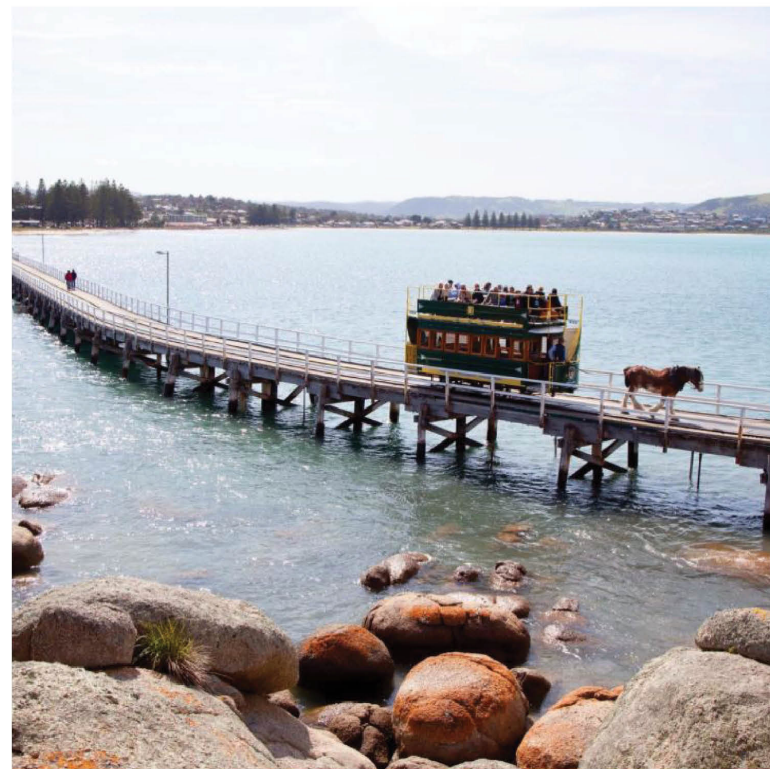


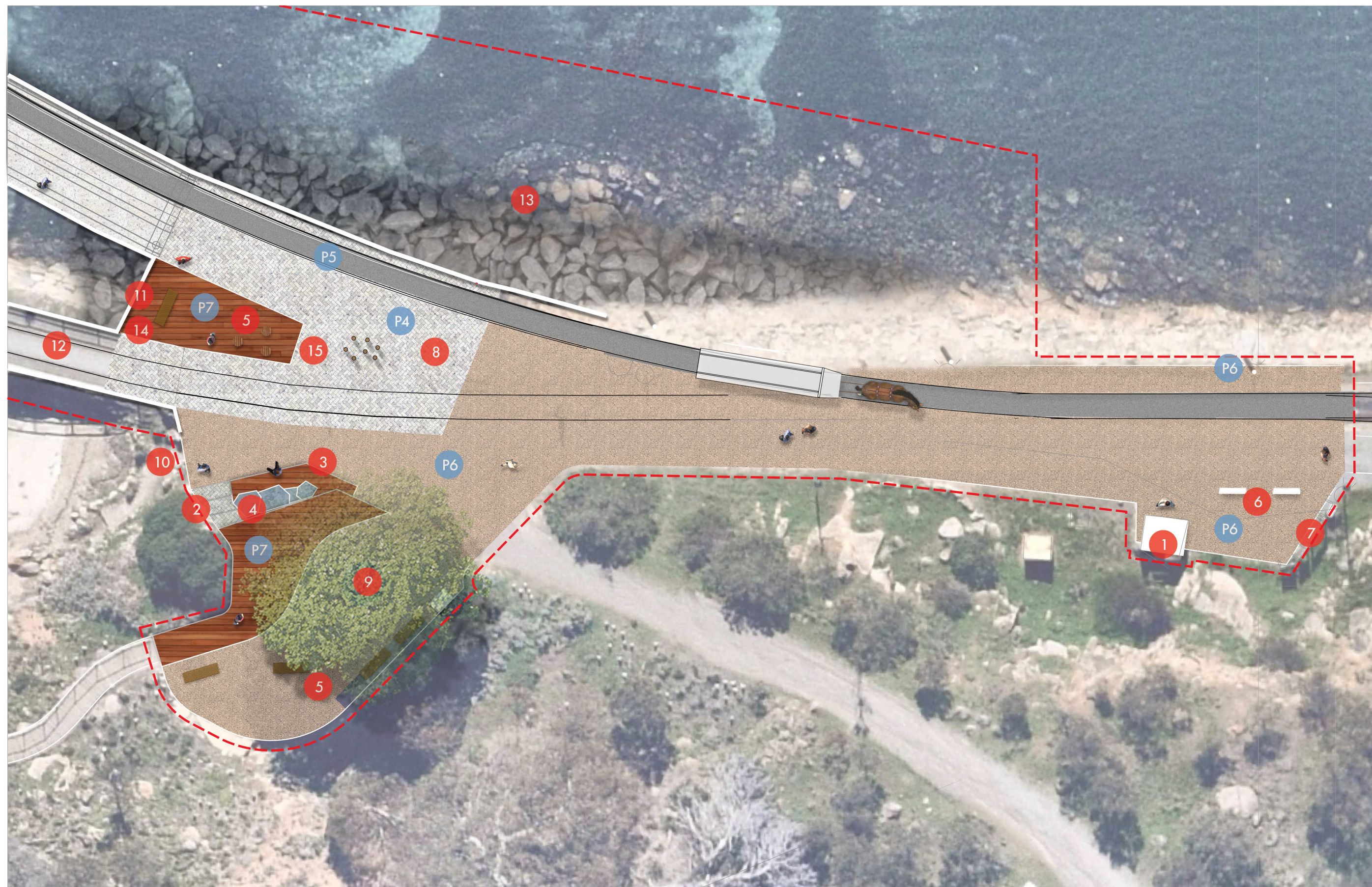


Granite Island Landing



LEGEND

- 1 Existing Shelter
- 2 Stairs
- 3 Raised informal deck seating
- 4 Existing "Granite Island" boulder signage to be retained and re-curated to formalise boulders in accordance to conversation with traditional owners
- 5 Public furniture - Opportunity for re-use of decommissioned causeway timbers
- 6 Existing furniture retained
- 7 Opportunity for interpretive signage to be upgraded
- 8 Engineered stone unit paving to tie into causeway deck
- 9 Existing Moreton Bay Fig tree to be protected and retained
- 10 Beach access
- 11 Viewing platform with integrated interpretive signage
- 12 Partial retention + reconstruction of old causeway jetty
- 13 Rock wall abutment - refer structural
- 14 Terminate existing handrail and tie into new
- 15 Cultural/historical/art opportunities using up-cycled timber from decommissioned causeway - opportunity for interpretive signage



PAVING TREATMENT

- P4 Concrete unit pavers
- P5 Equestrian matting
- P6 Compacted quarry rubble
- P7 Hardwood or composite timber deck



DIT.gicauseway@sa.gov.au
1300 794 880

Follow us on:
   



Government
of South Australia



BUILDING
WHAT MATTERS