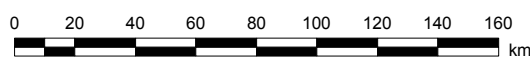
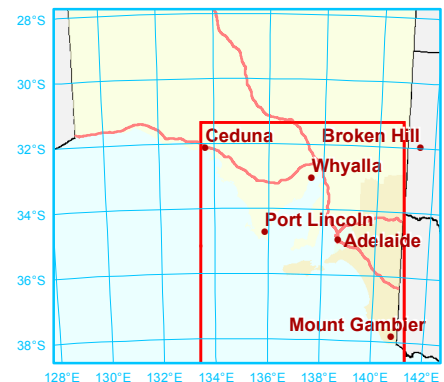


- SABFAC Contribution Marine Facilities
- Marine Facilities
- DPTI Maintained Road, Sealed
- DPTI Maintained Road, Unsealed
- Other Road

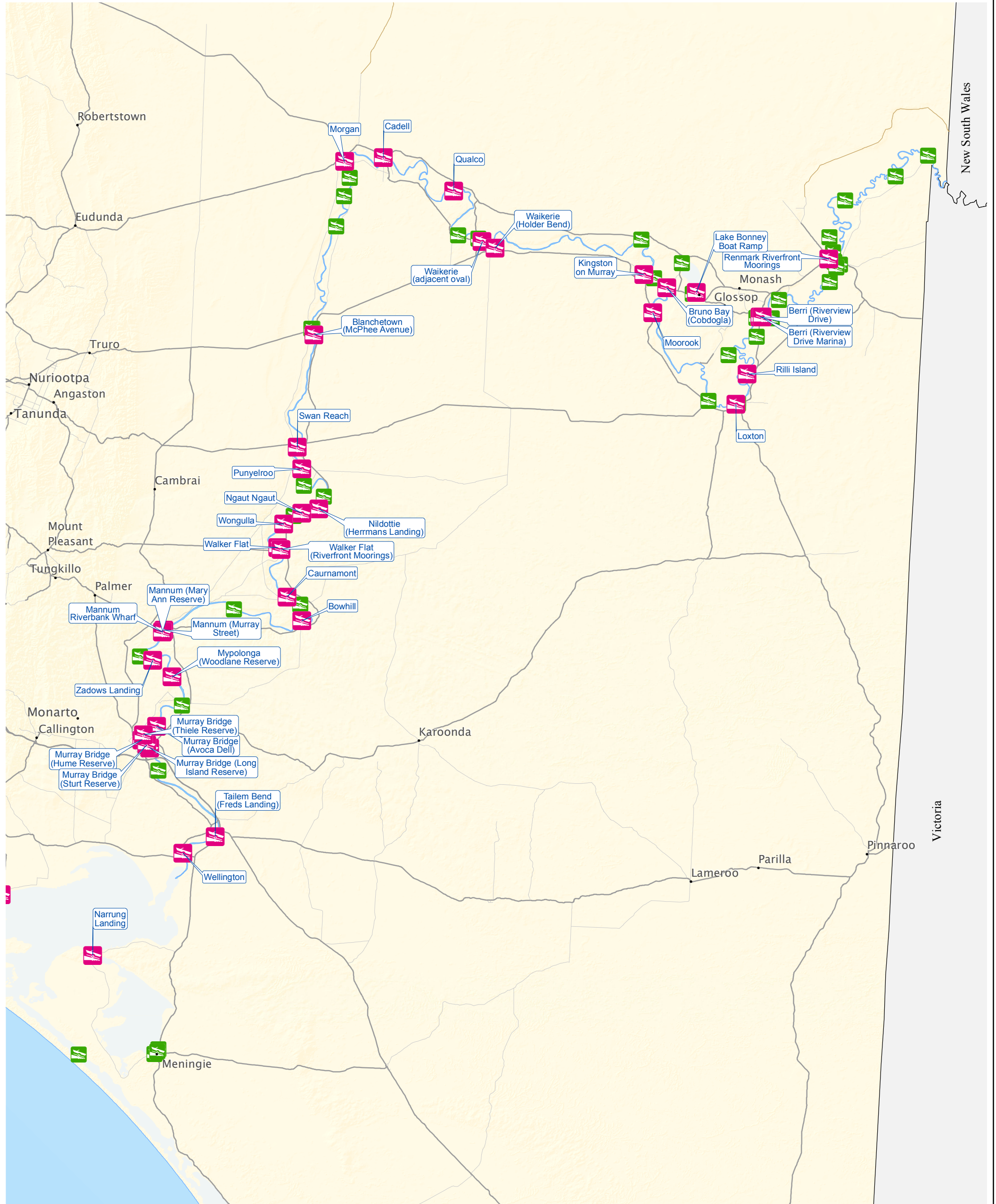







The information has been collected for internal use by the Department of Planning, Transport and Infrastructure, and is provided herein as an information resource only. It is not a substitute for independent professional advice and users should exercise their own skill, care and judgement with respect to the use of this material. Whilst all reasonable care has been taken in its preparation, the State of South Australia does not guarantee, and accepts no legal liability arising from or connected to, the accuracy, reliability, currency, suitability or completeness of the material.

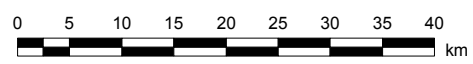
Map Projection: Lamberts Conformal Conic
 Standard Parallels: 28°S & 36°S
 Central Meridian: 135°E
 Datum: GDA 94



Government of South Australia
 Department of Planning, Transport and Infrastructure

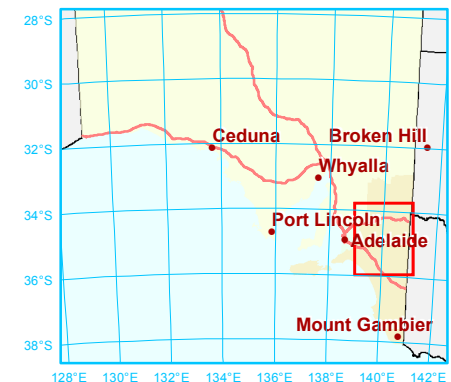


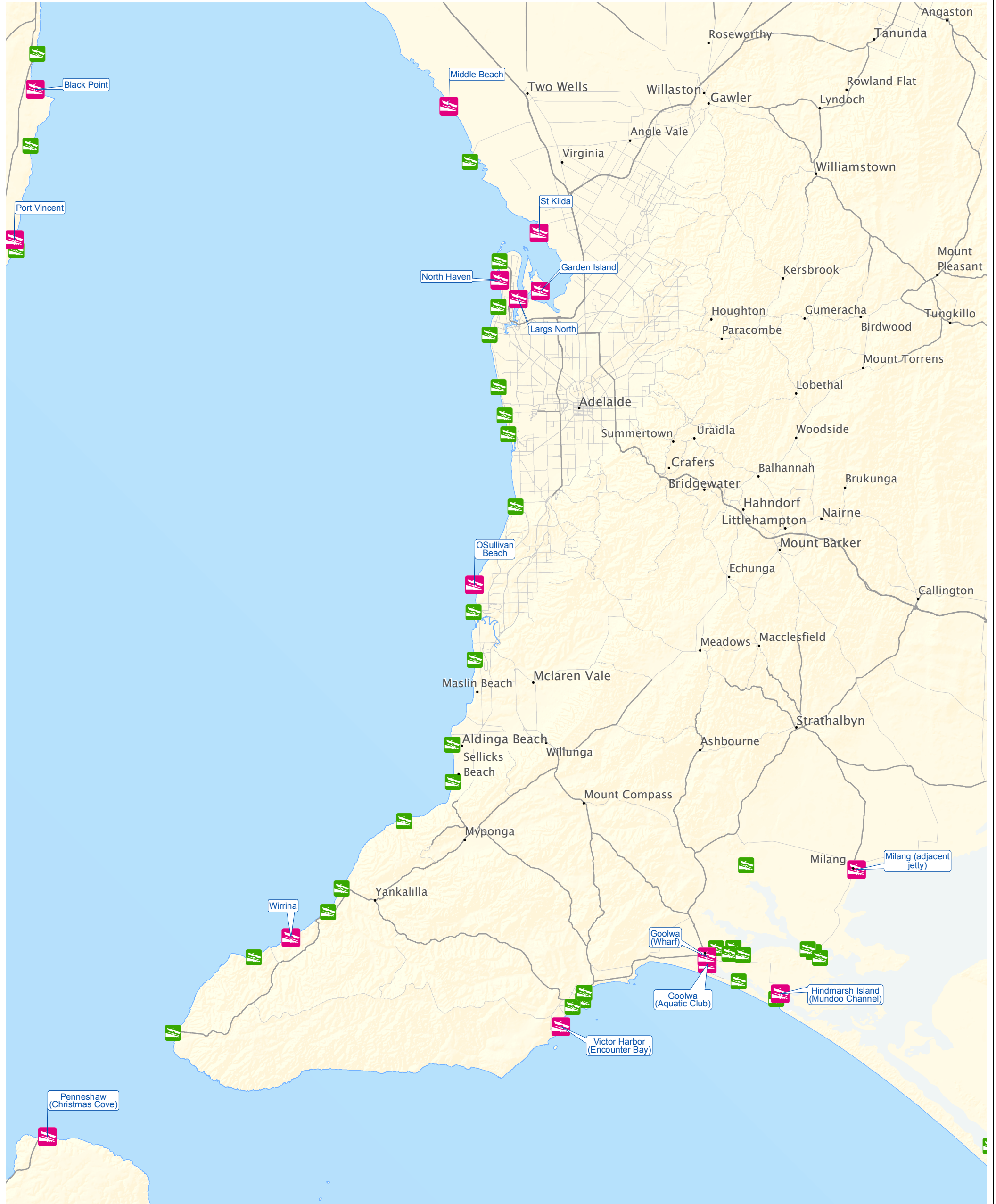
-  SABFAC Contribution Marine Facilities
-  Marine Facilities
-  DPTI Maintained Road, Sealed
-  DPTI Maintained Road, Unsealed
-  Other Road








The information has been collected for internal use by the Department of Planning, Transport and Infrastructure, and is provided herein as an information resource only. It is not a substitute for independent professional advice and users should exercise their own skill, care and judgement with respect to the use of this material. Whilst all reasonable care has been taken in its preparation, the State of South Australia does not guarantee, and accepts no legal liability arising from or connected to, the accuracy, reliability, currency, suitability or completeness of the material.

Map Projection: Lamberts Conformal Conic
 Standard Parallels: 28°S & 36°S
 Central Meridian: 135°E
 Datum: GDA 94



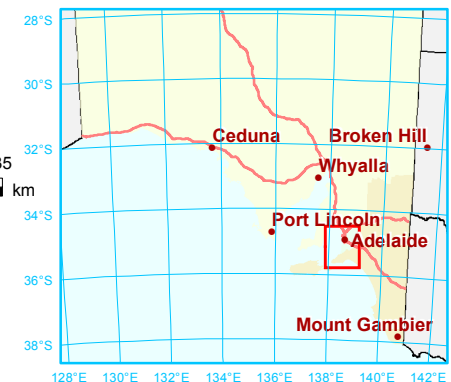


-  SABFAC Contribution Marine Facilities
-  Marine Facilities
-  DPTI Maintained Road, Sealed
-  DPTI Maintained Road, Unsealed
-  Other Road

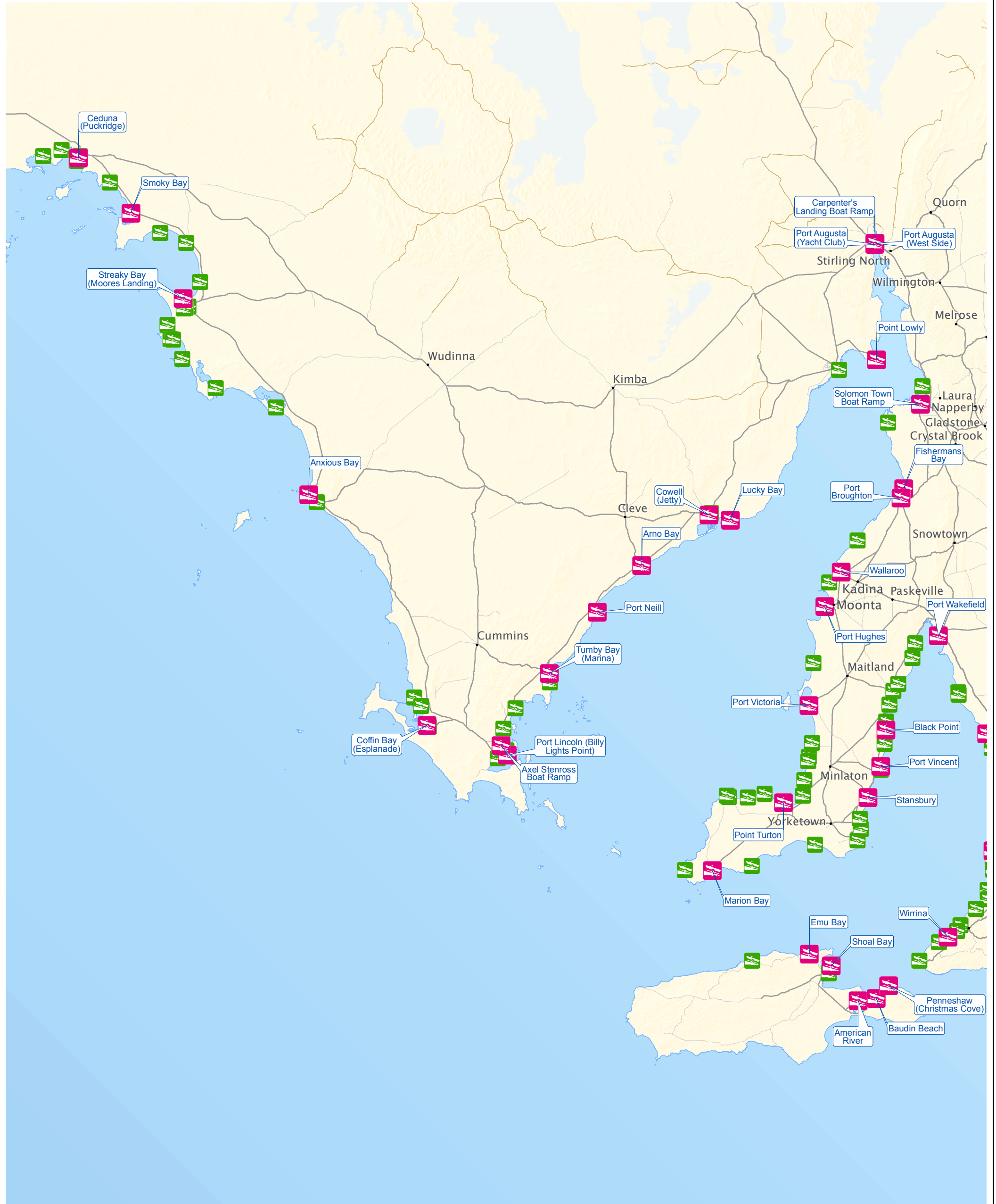







The information has been collected for internal use by the Department of Planning, Transport and Infrastructure, and is provided herein as an information resource only. It is not a substitute for independent professional advice and users should exercise their own skill, care and judgement with respect to the use of this material. Whilst all reasonable care has been taken in its preparation, the State of South Australia does not guarantee, and accepts no legal liability arising from or connected to, the accuracy, reliability, currency, suitability or completeness of the material.

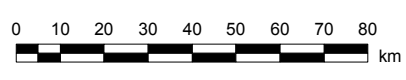
Map Projection: Lamberts Conformal Conic
 Standard Parallels: 28°S & 36°S
 Central Meridian: 135°E
 Datum: GDA 94



Government of South Australia
 Department of Planning, Transport and Infrastructure

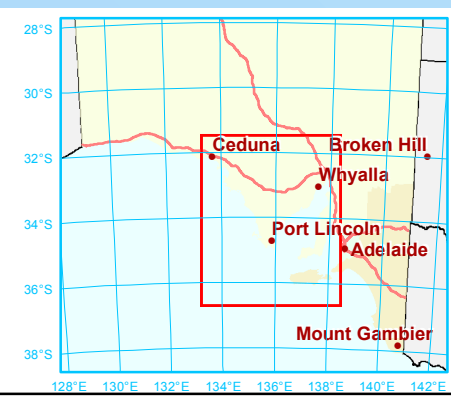


-  SABFAC Contribution Marine Facilities
-  Marine Facilities
-  DPTI Maintained Road, Sealed
-  DPTI Maintained Road, Unsealed
-  Other Road

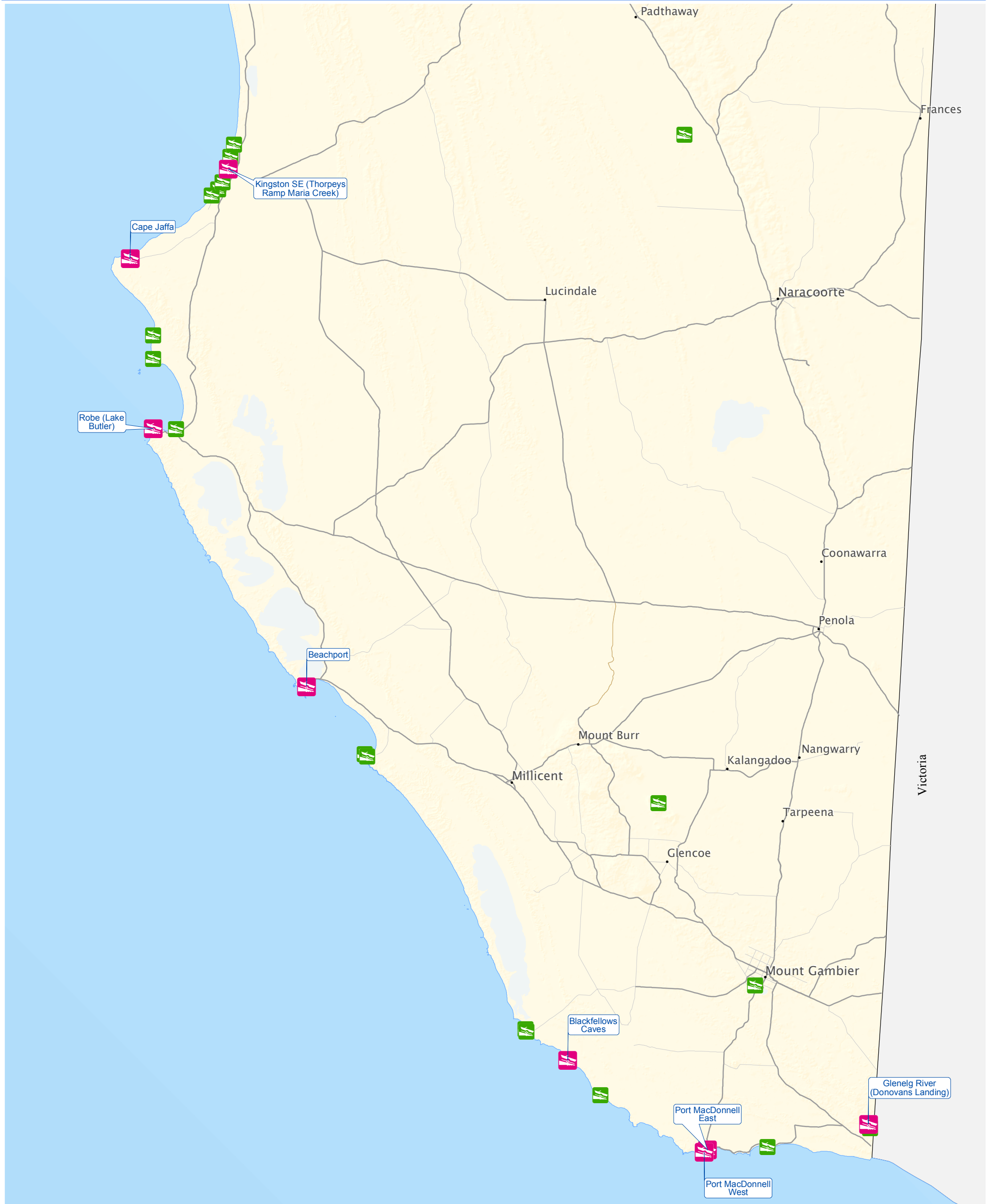


The information has been collected for internal use by the Department of Planning, Transport and Infrastructure, and is provided herein as an information resource only. It is not a substitute for independent professional advice and users should exercise their own skill, care and judgement with respect to the use of this material. Whilst all reasonable care has been taken in its preparation, the State of South Australia does not guarantee, and accepts no legal liability arising from or connected to, the accuracy, reliability, currency, suitability or completeness of the material.

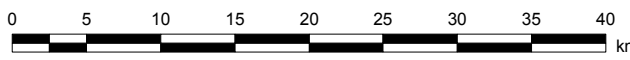
Map Projection: Lamberts Conformal Conic
 Standard Parallels: 28°S & 36°S
 Central Meridian: 135°E
 Datum: GDA 94



Government of South Australia
 Department of Planning, Transport and Infrastructure

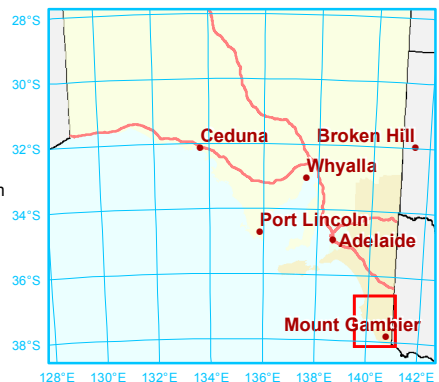


- SABFAC Contribution Marine Facilities
- Marine Facilities
- DPTI Maintained Road, Sealed
- DPTI Maintained Road, Unsealed
- Other Road



The information has been collected for internal use by the Department of Planning, Transport and Infrastructure, and is provided herein as an information resource only. It is not a substitute for independent professional advice and users should exercise their own skill, care and judgement with respect to the use of this material. Whilst all reasonable care has been taken in its preparation, the State of South Australia does not guarantee, and accepts no legal liability arising from or connected to, the accuracy, reliability, currency, suitability or completeness of the material.

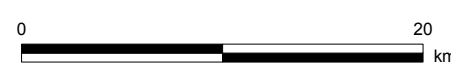
Map Projection: Lamberts Conformal Conic
 Standard Parallels: 28°S & 36°S
 Central Meridian: 135°E
 Datum: GDA 94



Government of South Australia
 Department of Planning, Transport and Infrastructure

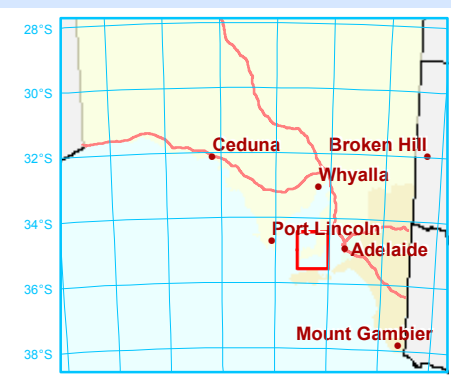


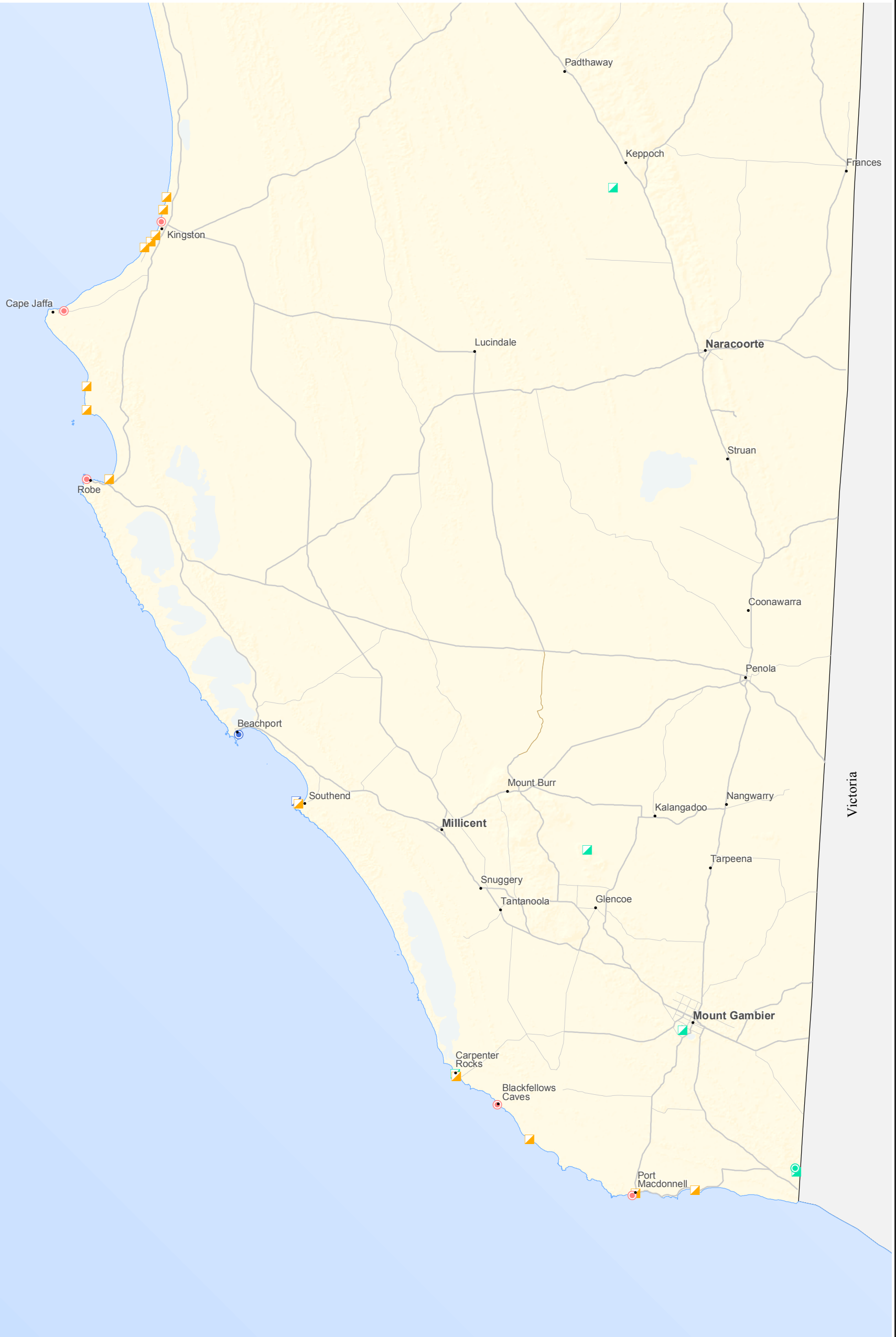
- Rating**
- 1-Beach launch and retrieval
 - 2A-Marine – Ramp launch and retrieval
 - 2B-Inland Waters – Ramp launch and retrieval
 - 3A-Marine – Floating Pontoon or landing structures and retrieval
 - 3B-Inland Waters - Floating Pontoon or landing structures and retrieval
 - 4-Floating Pontoon or landing structures and retrieval
 - DPTI Maintained Road, Sealed
 - DPTI Maintained Road, Unsealed
 - Other Road



The information has been collected for internal use by the Department of Planning, Transport and Infrastructure, and is provided herein as an information resource only. It is not a substitute for independent professional advice and users should exercise their own skill, care and judgement with respect to the use of this material. Whilst all reasonable care has been taken in its preparation, the State of South Australia does not guarantee, and accepts no legal liability arising from or connected to, the accuracy, reliability, currency, suitability or completeness of the material.

Map Projection: Lamberts Conformal Conic
 Standard Parallels: 28°S & 36°S
 Central Meridian: 135°E
 Datum: GDA 94





- Rating**
- 1-Beach launch and retrieval
 - 2A-Marine – Ramp launch and retrieval
 - 2B-Inland Waters – Ramp launch and retrieval
 - 3A-Marine – Floating Pontoon or landing structures and retrieval
 - 3B-Inland Waters - Floating Pontoon or landing structures and retrieval
 - 4-Floating Pontoon or landing structures and retrieval
 - DPTI Maintained Road, Sealed
 - DPTI Maintained Road, Unsealed
 - Other Road



The information has been collected for internal use by the Department of Planning, Transport and Infrastructure, and is provided herein as an information resource only. It is not a substitute for independent professional advice and users should exercise their own skill, care and judgement with respect to the use of this material. Whilst all reasonable care has been taken in its preparation, the State of South Australia does not guarantee, and accepts no legal liability arising from or connected to, the accuracy, reliability, currency, suitability or completeness of the material.

Map Projection: Lamberts Conformal Conic
 Standard Parallels: 28°S & 36°S
 Central Meridian: 135°E
 Datum: GDA 94

