

Information Sign for Default Beach Speed Limits

Operational Instruction 4.12

November 2023



Government of South Australia
Department for Infrastructure
and Transport

**Build.
Move.
Connect.**

Disclaimer

While every reasonable effort has been made to ensure that this document is correct at the time of publication, the Minister for Infrastructure and Transport, its agencies, instrumentalities, employees and contractors disclaim any and all liability to any person in respect to anything or the consequence of anything done or omitted to be done in reliance upon the whole or any part of this document.

Publication details

Document information

Title	Information Sign for Default Beach Speed Limits Operational Instruction 4.12
Owner	Traffic Engineering Standards
KNet reference	20695558

Change history

Version number	Date changed	Nature of amendment
1	13 Oct 2023	Original issue
2	15 Nov 2023	Section 1, Section 3 and Appendix A amended to include revised sign design

Approvals record

Approvers	Position	Date	Signature
Stephen Pascale	Manager, Traffic Services	14 Nov 2023	Digital Approval 31661

We acknowledge the Traditional Custodians of the Country throughout South Australia and recognise their continuing connection to land and waters. We pay our respects to the diversity of cultures, significance of contributions and to Elders past, present and emerging.



Contents

1	Introduction.....	5
2	Removal of existing speed limit signs.....	6
3	Use of signs	6
4	Location of signs	7
4.1	Relevance to drivers	7
4.2	Sign clutter.....	7
4.3	Sign visibility	7
4.4	Maintenance	9
4.5	Repeater signs.....	9
5	Examples of recommended sign locations.....	9
	Appendix A - Sign details TES 2017.....	12

1 Introduction

One of the primary road safety concerns for coastal areas is the safety of vulnerable beach goers (pedestrians) and the potential conflict with vehicles driving on a beach. Unlike in a road environment there is no separation between vehicles and people in beach environments, and beaches represent a unique driving environment that is very different and less predictable to driving on the road.

Beaches in South Australia are considered a 'road-related area' under the *Road Traffic Act 1961*. From 1 December 2023, the default speed limit on beaches is 40 km/h, and 25 km/h when travelling within 50 m of a person, unless otherwise signposted. Any signed speed limits on beaches throughout South Australia will continue to apply. The speed limit of 25 km/h offers greater protection to vulnerable beach goers, while the 40 km/h speed limit reflects the risks associated with varying and unpredictable beach driving conditions.

As with all speed limits, this is a maximum speed at which drivers are legally permitted to travel. Drivers need to be mindful of the conditions and adjust their speed accordingly.

An information sign has been developed to remind drivers of the new default speed limits on beaches.

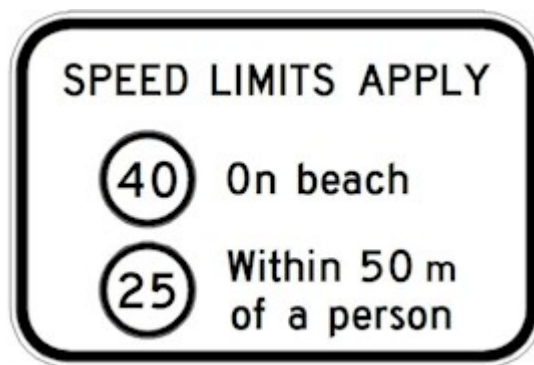


Figure 1: TES 20179 Beach Speed Limits information sign

When used in accordance with this Operational Instruction, this sign may be installed by Councils under the Minister's *Instrument of General Approval and Delegation to Council*, or by other road authorities with the approval of the Department's Network Management Services. Signs which vary from this Operational Instruction require the separate approval of the Department's Manager, Traffic Services for each location prior to installation.

NOTE: Speed limits in National Parks are in accordance with the Regulation 10(2) of the *National Parks (National Parks and Wildlife (National Parks) Regulations 2016* under the *National Parks and Wildlife Act 1972*. As such, default limits under the *Australian Road Rules Rule 25* and the default limits on beaches under Regulation 8A of the *Road Traffic (Road Rules – Ancillary and Miscellaneous Provisions) Regulations 2014* do not apply within National Parks.

2 Removal of existing speed limit signs

With the introduction of the new default speed limit on beaches, there is an opportunity for Councils to review any pre-existing signed speed limits on beaches, to either:

1. Adopt the new default and remove any pre-existing signed speed limits,
2. Continue to maintain their existing approved signed beach speed limit, or
3. Commence a separate approval process with the Department to approve any pre-existing un-approved signed beach speed limits, or request a new speed limit that may vary from the new default.

This Operational Instruction grants approval under Section 17(2) of the *Road Traffic Act 1961* for Council to remove any pre-existing speed limit signs from a beach such that the new default speed limits apply. Council must prepare and endorse a traffic impact statement for the removal of any pre-existing speed limit signs, keep records of the times and dates that the signs are removed, and notify the Commissioner of Police of the date of removal of the speed limit signs within 20 working days of their removal.

For approval of an existing un-approved beach speed limit sign, or to request approval for a speed limit other than the new default limit, refer to the *Speed Limit Guideline for South Australia*.

3 Use of signs

The Beach Speed Limits information sign (TES 20179) **may** be used on beaches where:

- Formal vehicle access to the beach is provided,
- No other speed limit sign is installed, and
- The beach is frequently used by pedestrians (for example, beachgoers walking to and from nearby properties or car parks; where the beach is located near shack areas or coastal population centres; or the beach is remote but is a popular camping / fishing / recreational location)

It may also be used at other beach locations with less pedestrian activity as a general reminder that the new default speed limits apply.

There is no mandatory requirement for Councils to install the Beach Speed Limits information sign (TES 20179).

Where used, Councils may also supplement the Beach Speed Limits information sign (TES 20179) with a sign reflecting any applicable Council by-laws under the *Local Government Act 1999* and *Local Government (General) Regulations 2013* in relation to vehicle access to the beach and dunes.

4 Location of signs

Where used, the Beach Speed Limits information sign (TES 20179) should take the following factors into account to determine the most suitable location for the sign.

4.1 Relevance to drivers

The sign should be located such that it will be seen by the majority of drivers entering the beach, and not by other road users. For example, the sign should be located at the entrance from the car park to the beach, not at the entrance from the road to the car park.

Where possible, the sign should be located where drivers are likely to encounter pedestrians. For example, if there are separate vehicle and pedestrian access tracks leading to the beach and drivers are unlikely to see pedestrians on the access track, the sign should be located as close as possible to the beach itself, where drivers are more likely to share the environment with pedestrians. However, the ease of accessing the location for installation and future maintenance of the sign also needs to be considered (see Section 4.4 - Maintenance).

4.2 Sign clutter

The sign should be conspicuous and not located near other signs. Where there are other signs located at the desired TES 20179 sign location, consider rationalising these signs, ensuring that all signs are necessary and appropriately located for their target audience. The following principles (from the Austroads *Guide to Traffic Management (AGTM) Part 10 Transport Control - Types of Devices (2020)* Section 4.3.1) should be followed when assessing sign clutter:

Excessive use of signs should be avoided as this can cause visual clutter, and driver confusion or information overload. The following questions should always be asked:

- *Are all signs really needed?*
- *Do they serve any practical function?*
- *Can they be read and acted upon by a driver?*
- *Can an excessive number of signs be replaced by a smaller number of larger signs that are more rationally designed and located?*
- *Is a particular type of sign being used so often for purposes of lesser importance that its value in solving more serious problems is degraded?*

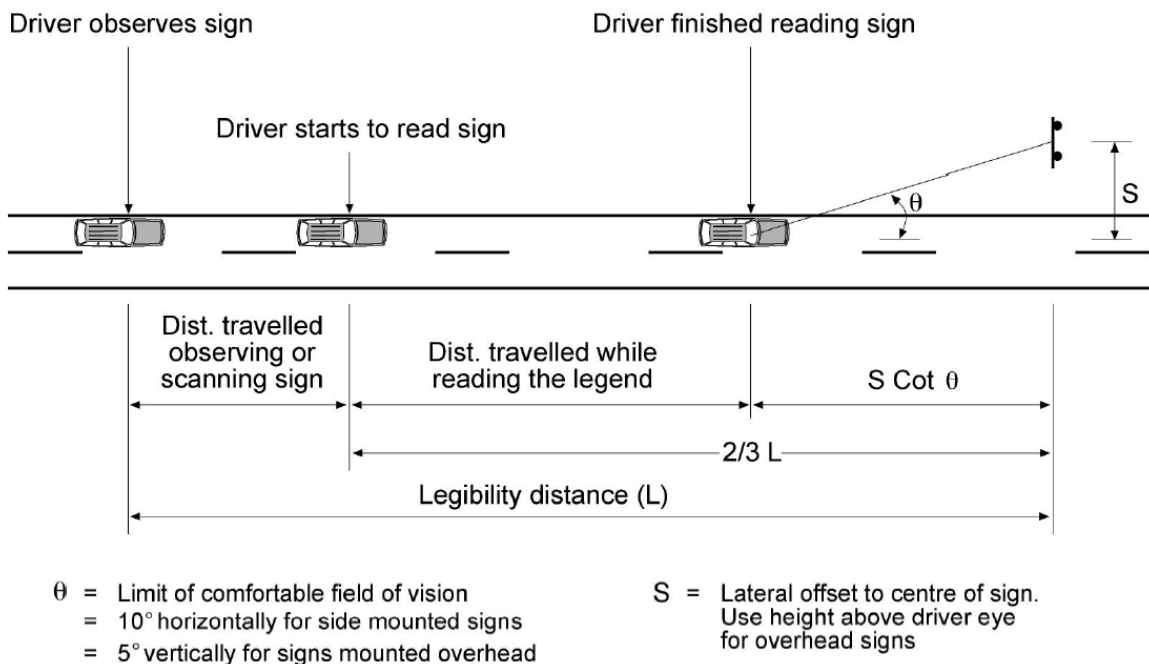
4.3 Sign visibility

The sign needs to be clearly visible to approaching drivers. As these signs may be installed in a variety of terrains and speed environments which are not typical road environments (eg winding, undulating tracks through dunes, or wide beach accesses), the following detail from *AGTTM Part 10 Transport Control – Types of Devices (2020)* is provided to ensure signs are located appropriately for the particular situation.

AGTM Part 10 Transport Control – Types of Devices (2020) Section 6.3.7 provides guidance on legibility distance for signs ie the distance at which a driver needs to observe and read the sign.

Legibility distance is related to approach speed and the lateral distance of the sign from the traffic lane or travel path.

Figure 6.3: Sign legibility distance



Extract from AGTM Part 10 (2020)

For side mounted signs, legibility distance (the distance at which a driver needs to be able to observe the sign) is determined using the following formula:

$$L = 0.105NV + 8.55S$$

where:

L = legibility distance (metres)

N = number of words on the sign (in this case, 4)

V = travel speed of vehicles approaching the sign (km/h)

S = lateral displacement of the centre of the sign from the centre of the traffic lane (metres)

For example, for approach speeds of 50 km/h, with the centre of the sign located 4 m from the centre of the traffic lane or travel path, the sign needs to be clearly visible from a distance of 50 m on the approach to the sign.

Signs may be duplicated (installed on either side of the track or access road) where required.

On high speed approaches, the sign should be located in advance of the beach or dunes to allow drivers to react appropriately. Refer to Australian Standard AS 1742.2 Appendix D for details about locating signs in advance of a hazard or action point.

Refer to Australian Standard AS 1742.2 Appendix D for minimum sign mounting height details.

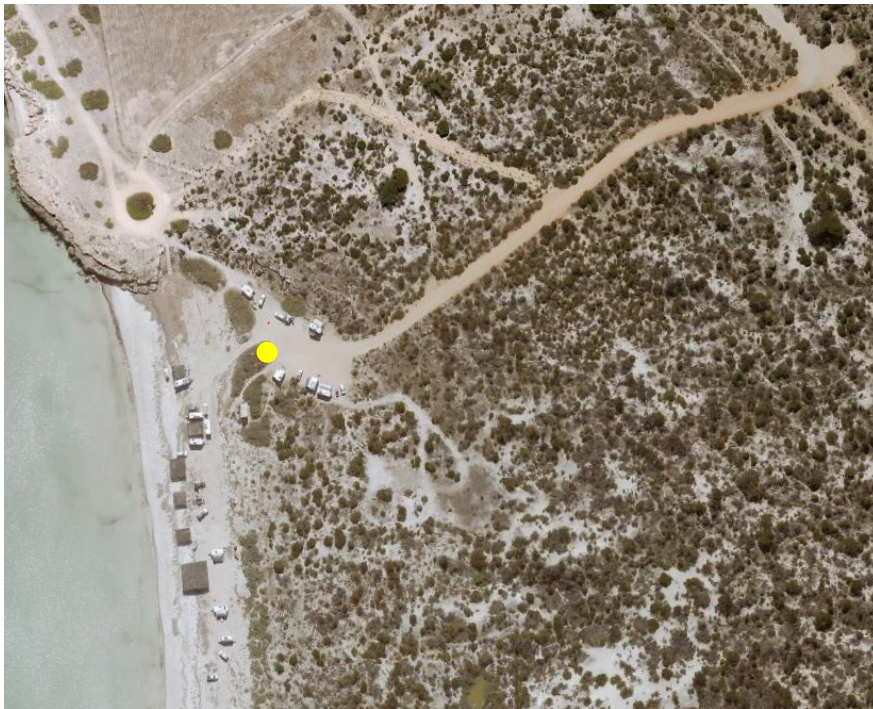
4.4 Maintenance

Signs should be located where they can be regularly inspected and maintained as part of the road authority's maintenance practices.

4.5 Repeater signs

Additional signs may be installed at regular intervals along the beach where there is a need to reinforce the message to drivers, taking into consideration the above factors. For example, if there are known areas of pedestrian activity located remote from the formal beach access point, it may be appropriate to install a repeater sign at this location.

5 Examples of recommended sign locations



Example 1 - Sign location at the entrance to the beach from car park



Example 2 - Sign location where access paths diverge



Example 3 - Sign location at shared pedestrian / vehicle access track



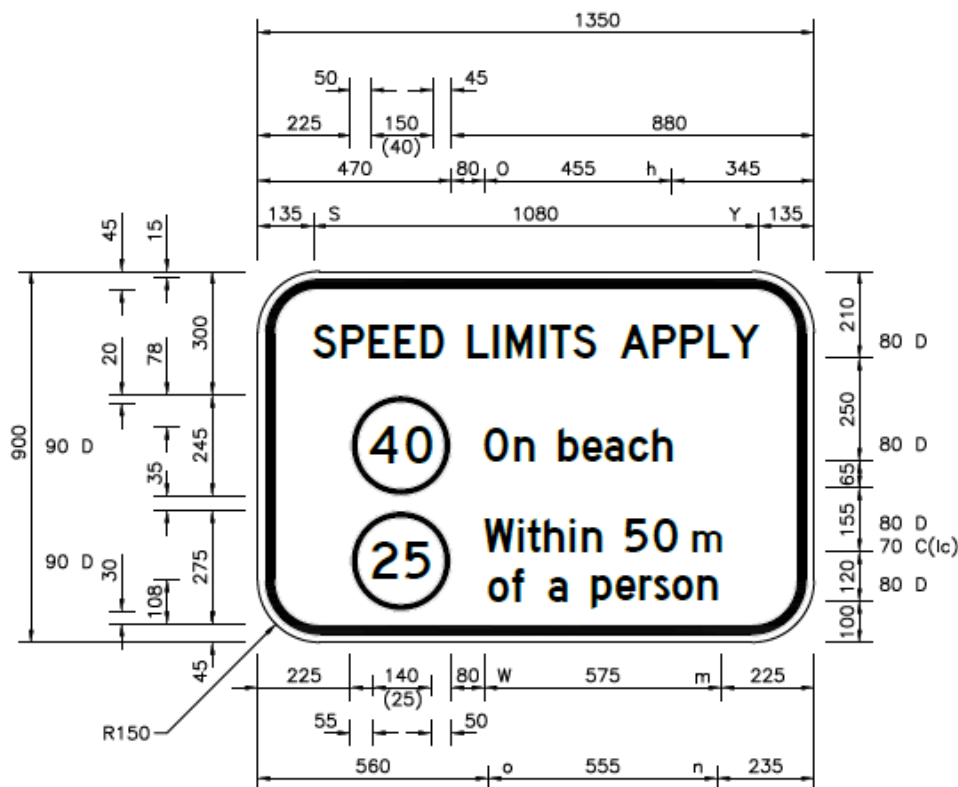
Example 4 - Sign location on high speed approach to beach

Appendix A - Sign details TES 20179

Road and Marine Services

Network Management Services, Traffic Solutions Unit

Specific Road Signs - Specifications, South Australia



NOTE:

To be used in accordance with Operational Instruction 4.12



Black

White class 400

Scale 1: 15

ALL DIMENSIONS ARE IN MILLIMETRES

Total Sign Area: 1.20 sqm

Sign Type: Information

Location: Various

Drawn: M. Douglas Authorisation:
Edition: C Rev: 1
Date: 7 November, 2023 Date:

- NOTE -
Series 2000 Font

OI 4.12

TES 20179