



Main South Road (Southern Expressway to Robinson Road) Planning Study

What we heard – consultation summary

Project Overview

Main South Road, the Southern Expressway and Victor Harbor Road provide access to many facilities located south of Adelaide including Adelaide's southern beaches, McLaren Vale wine region, Kangaroo Island (via the port at Cape Jervis) and the wider Fleurieu Peninsula.

The 3km section of Main South Road that connects the Southern Expressway, Old Noarlunga to the newly duplicated sections at Victor Harbor Road and Robinson Road, Seaford Heights requires further investigation and planning.

The Main South Road (Southern Expressway to Robinson Road) Planning Study for this section of Main South Road is being undertaken to understand local considerations and issues to inform the development of future upgrades.

Currently, there is no funding commitment for design and construction of this section.

Community Engagement

Community and stakeholder engagement is critical to inform the planning study process. Consultation during this phase was an early opportunity to hear community insights and understand local experiences that might not be captured by a technical analysis.

We wish to thank those that provided feedback by attending the listening posts and completing our online survey over the six-week consultation period between late July and early September 2023.



Government
of South Australia

Department for Infrastructure
and Transport

How we engaged

We engaged directly with members of the community by holding Listening Posts and meetings with key stakeholders to understand local knowledge, lived experiences and concerns of communities in and around this section of Main South Road. As a primary way of collecting feedback, we encouraged people to complete an online survey and digitally 'pin' comments on the project map relating to specific locations.

To help us reach people who live and work around the planning study area we delivered almost 1,400 flyers to letterboxes, called local businesses and stakeholders, and held our listening posts in varied locations that community members visit, including Seaford

Central, Drakes Hackham and Old Noarlunga Football Club. We also promoted the study via our social media channels and project email lists and in the City of Onkaparinga's community facilities.

We had a high level of participation in the online survey with 753 community members completing the survey and 333 providing comments on the map. Additionally, over 250 people attended the four Listening Posts, with 140 people taking time to give detailed feedback. This has given us clear insights into what is important now and in the future for this section of Main South Road.

ENGAGEMENT SNAPSHOT



Consultation

opened on 1 July 2023 and closed 4 September 2023



753

survey responses and pieces of feedback received.

576 social media reactions and comments



333

interactive map comments

140

listening post conversations



Who provided feedback

Almost 70% of the 753 community members who completed the online survey were local residents. Over 50% told us they live and work in the southern suburbs/Fleurieu Peninsula, 20% work or study in the local area, 12% own or manage a local business and 3% who were visitors or tourists. Additionally, 4% of respondents mentioned they are part of a local community group.

The majority of respondents were motorists or passengers travelling along the study area in a car or truck, with around 3% of respondents indicating they travelled through the study area on a motorbike and 5% by bus. Small proportions also used this section as a pedestrian (6%) or cyclist (5%).

Most survey respondents were frequent travellers along this section: 74% travel through the area most days, 20% at least once a week and 6% traveling through monthly or occasionally.

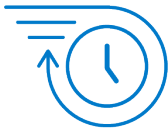
What we heard

The feedback we received indicated that most people are dissatisfied with this section of Main South Road as it is at the moment - 89% of survey respondents said they are dissatisfied to some extent, and only 7% are satisfied (4% reported being neutral).

We asked people to tell us about their experience of this section of Main South Road, so we could understand what is working and where there are concerns.

Currently people feel more satisfied with aspects of this section of Main South Road like public transport, property access, road appearance and environmental impacts. People were much less satisfied with other aspects of this section, such as traffic flows, motorist safety, road conditions and speed limits.

We heard similar key feedback across all our engagement activities.



Traffic flows and travel time

Most people commented that this section of Main South Road is congested and slow moving in both north- and southbound directions, particularly during peak hours and after crashes. There were many comments about the impacts of changing lane configurations and merging behaviours, as well as delays due to traffic light sequences. Many comments related to traffic movements at specific intersections, such as Seaford Road and River Road Access Road, and at locations such as the D V Fleming Bridge and entry to the Southern Expressway (northbound). These are summarised on a map on the page 5.

Some people expressed concern about the impact of future population growth and new housing developments in the local area, such as the Onkaparinga Valley Heights development, given that the likely resulting increases in traffic volumes associated with this growth.



Motorist safety and emergency access

Most people commented on the regular crashes and near-miss incidents that occur along this section. Many people saw this as a result of the changes in speed limits, merging lanes and poor driver behaviour due to frustration and impatience when stuck in traffic. Feedback received also included concerns with the lighting on River Road, and visibility of line markings.

There were a number of comments about the lack of alternative crossing points over the Onkaparinga River, with Main South Road being one of only two main roads to the southern regions (the other being Commercial Road) resulting in limited options to get around if crashes occurred on the D V Fleming Bridge. Some locals observed that often there was cut-through traffic moving through Old Noarlunga when crashes occurred on the D V Fleming Bridge that increase congestion and causes traffic bottlenecks at the township's main exit at Patapinda Road / Seaford Road.

People also raised concerns about lack of access for emergency vehicles and first responders when needed to attend crashes along this section



Road conditions

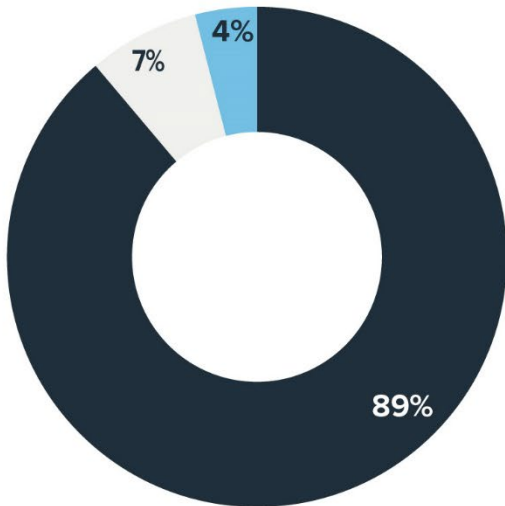
People commented on the poor condition of the road in this section, with an uneven road surface seen to be in need of repair.



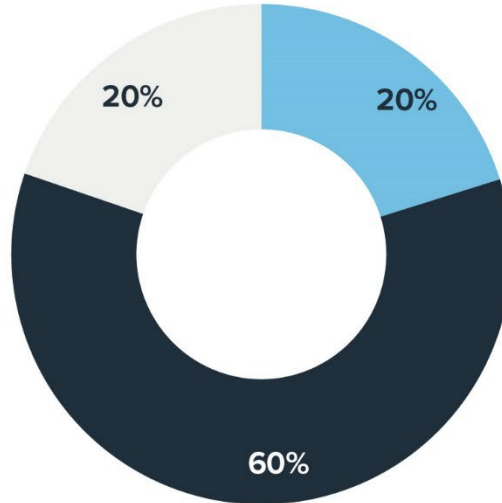
Speed limits

Many commented that the changing speed limits, particularly around the D V Fleming Bridge, often cause unsafe motorist behaviour and crashes. There were conflicting perspectives about whether the speed limits should be increased or decreased, but there was a preference for consistent limits through the section.

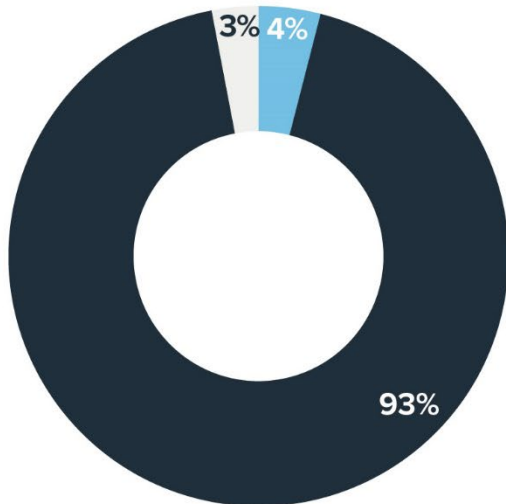
How satisfied are you with the overall existing conditions on Main South Road?



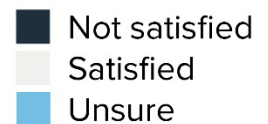
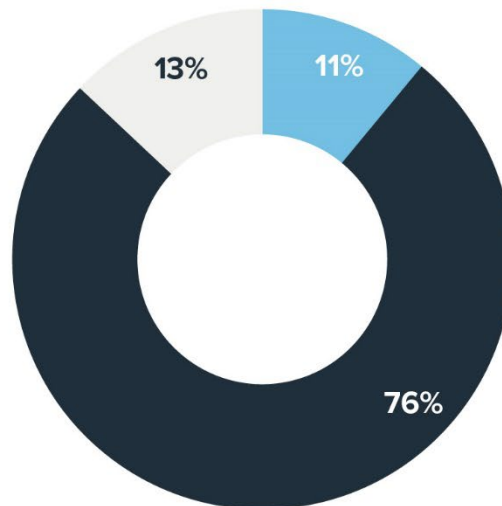
How satisfied are you with the road condition (surface, lane markings, etc)?



How satisfied are you with overall traffic flows and travel time?



How satisfied are you with motorist safety along this section of road?



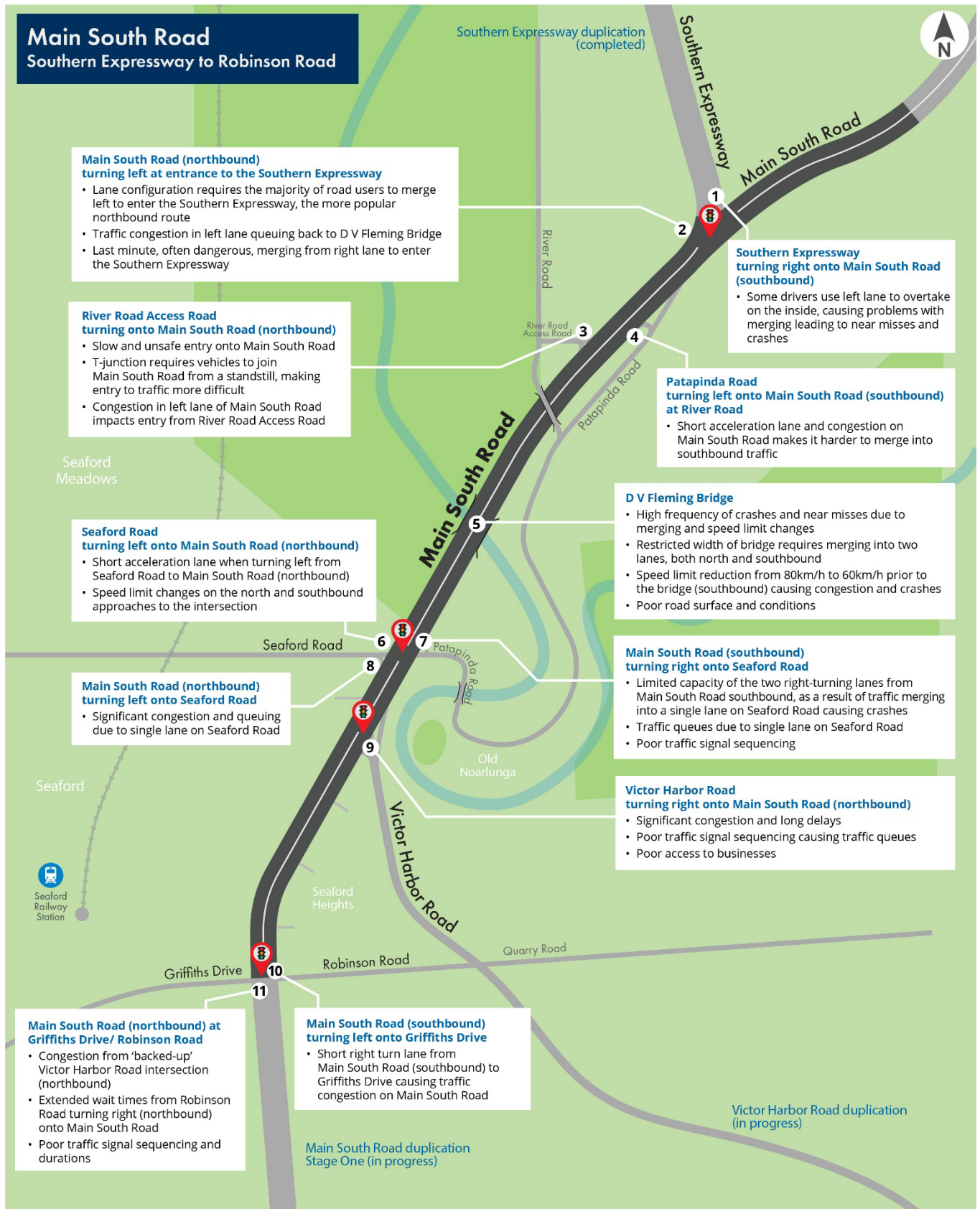
Future priorities

We asked people to tell us about what is important to change for this section of Main South Road in 5-10 years. Survey respondents told us these are the most important priorities:

- reduced travel times and less congestion (97%);
- improved safety for motorists and other road users (96%);
- uninterrupted travel from the Southern Expressway to Griffiths Drive/Robinson Road (81%), and
- fewer traffic lights (74%).

Community members provided many design suggestions that they felt would improve the current conditions. Suggestions received included grade separating key intersections, extending the Southern Expressway, reducing traffic lights and/or improving traffic sequencing, upgrading Seaford Road, upgrading the D V Fleming Bridge and addressing the River Road Access Road connection.

Summary of feedback at various locations along Main South Road



What's next?

We are reviewing feedback from the community and stakeholders along with technical considerations to identify opportunities to improve this section of Main South Road. There is no funding committed for design or construction of any upgrades at this location. Outcomes of this study will help to inform future investment decisions for the State.

More information

If you have any further enquiries or would like to register your interest in the planning study to receive updates, please:

- Register for update by visiting the project webpage www.dit.sa.gov.au/msr-robinson
- Email us at DIT.Engagement@sa.gov.au
- Call us on 1300 794 880