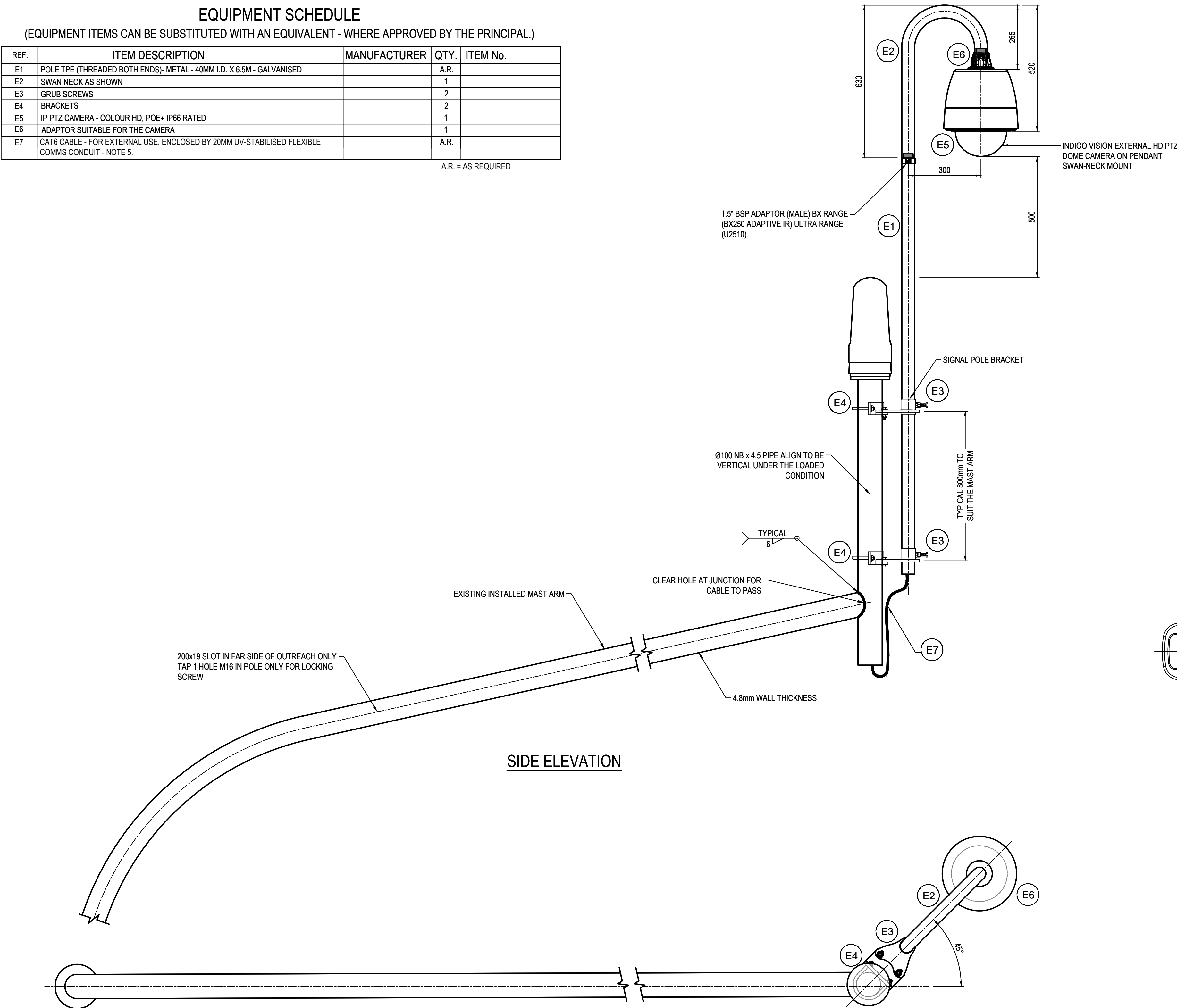


EQUIPMENT SCHEDULE

(EQUIPMENT ITEMS CAN BE SUBSTITUTED WITH AN EQUIVALENT - WHERE APPROVED BY THE PRINCIPAL.)

REF.	ITEM DESCRIPTION	MANUFACTURER	QTY.	ITEM No.
E1	POLE TPE (THREADED BOTH ENDS)- METAL - 40MM I.D. X 6.5M - GALVANISED		A.R.	
E2	SWAN NECK AS SHOWN		1	
E3	GRUB SCREWS		2	
E4	BRACKETS		2	
E5	IP PTZ CAMERA - COLOUR HD, POE+ IP66 RATED		1	
E6	ADAPTOR SUITABLE FOR THE CAMERA		1	
E7	CAT6 CABLE - FOR EXTERNAL USE, ENCLOSED BY 20MM UV-STABILISED FLEXIBLE COMMS CONDUIT - NOTE 5.		A.R.	

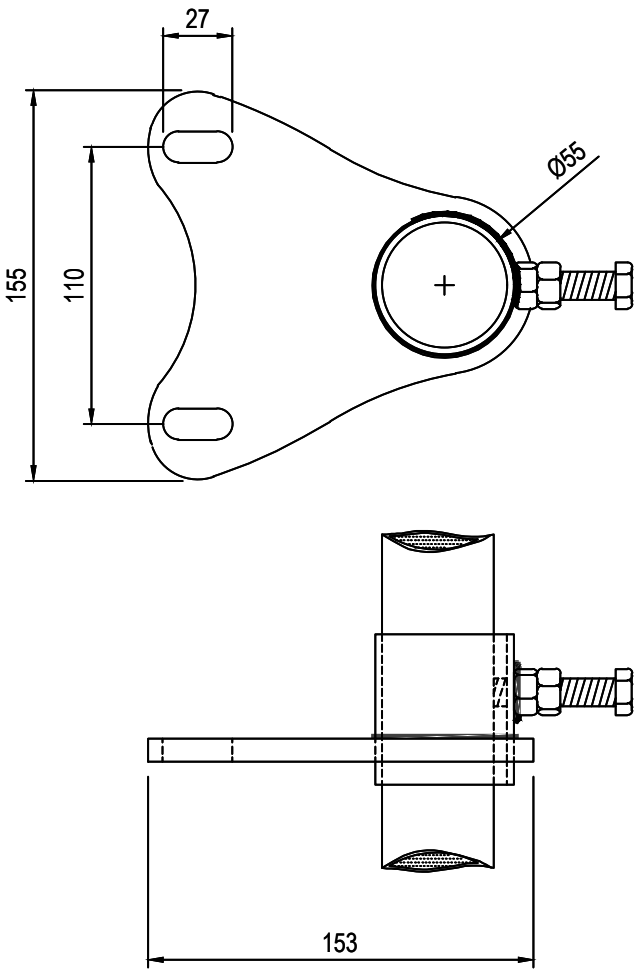
A.R. = AS REQUIRED



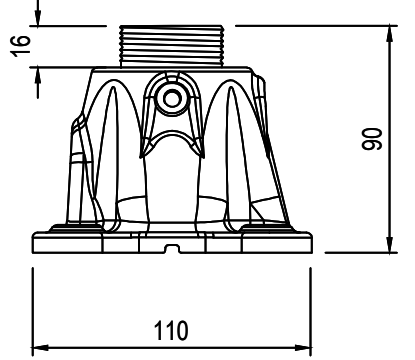
SIDE ELEVATION

TOP VIEW

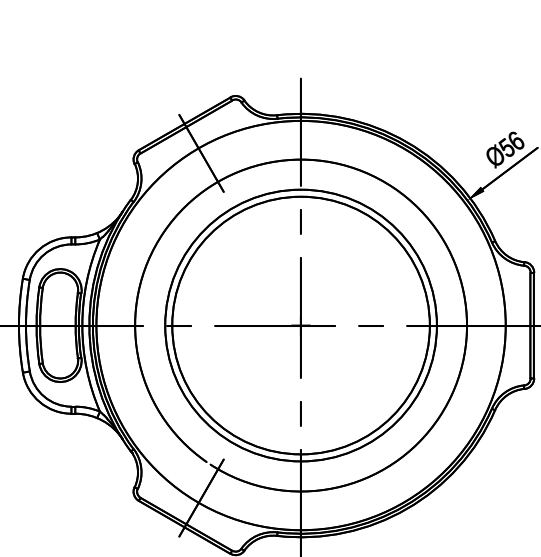
TYPICAL CAMERA MOUNT DETAIL ON TRAFFIC SIGNAL MAST ARM



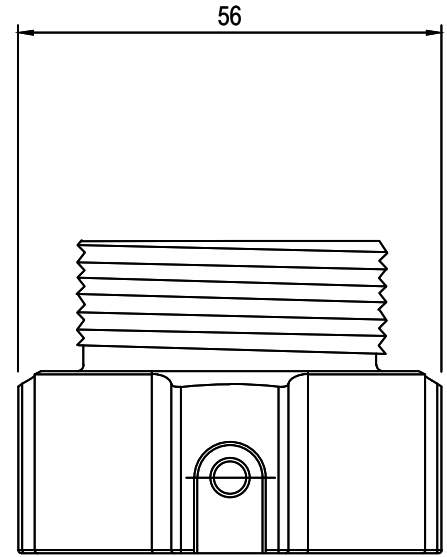
SIGNAL POLE BRACKET WITH ADDITIONAL ITEMS



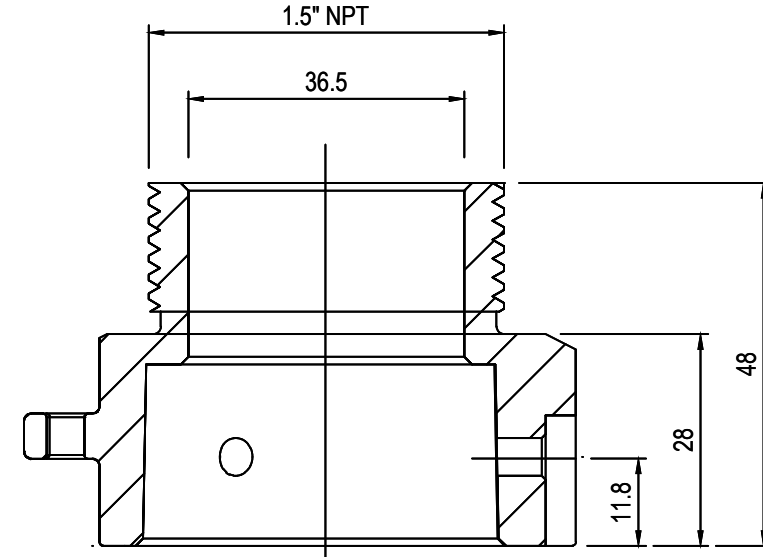
1.5" ADAPTOR (MALE)



TOP VIEW



SIDE VIEW



SECTION VIEW

1.5" BSP ADAPTOR (MALE)

- NOTES:
- ALL JOINTS MUST USE ANTI-SEIZE THREAD SEALANT.
 - SWAN NECK CAMERA MOUNT MUST HAVE THREADS TO SUIT THE SELECTED CAMERA.
 - HEAT SHRINKS USED MUST BE DOUBLE WALLED AND OF SUITABLE DIAMETERS.
 - THE CCTV MUST BE ANGLED 45 DEGREES HORIZONTAL TOWARDS THE INTERSECTION.
 - AT NON-ELV-TRAFFIC SIGNAL MAST ARM OR COMBO TRAFFIC SIGNAL/ROAD LIGHTING MAST ARM, 20MM FLEXIBLE COMMS CONDUIT SHALL BE CONTINUOUS FROM INSIDE THE CAMERA RISER POLE TO MAST ARM C4 BASE PIT, IN ORDER TO MAINTAIN SEGREGATION OF TELECOMMUNICATION FROM LV ELECTRICAL CABLING. CAT6 CABLE SHALL BE TERMINATED INTO A SUITABLE JUNCTION BOX AT THE BASE OF THE MAST ARM POLE.

					INDEX SHEET REFERENCE: XXXX SHEET X			<div>DESIGNED</div> <div>QUALIFICATION DATE:</div> <div>REVIEWER</div> <div>QUALIFICATION DATE:</div> <div>INDEPENDENT DESIGN CERTIFIER (IF REQUIRED)</div> <div>QUALIFICATION DATE:</div>		<div><div><div><div><div></div><div></div></div><div><div></div><div></div></div></div><div><div></div><div></div></div><div><div></div><div></div></div></div><div>Government of South Australia</div><div>Department for Infrastructure and Transport</div></div>		<div>PROJECT No.:</div> <div>FILE No.:</div> <div>DESIGN No.:</div> <div>SURVEY No.:</div> <div>PROJECT START ROAD RUNNING DISTANCE:</div> <div>PROJECT END ROAD RUNNING DISTANCE:</div> <div>SCALES:</div>		STANDARD DRAWING SWAN-NECK PTZ CAMERA MOUNT ON MAST ARM POLE TYPICAL DETAILS						
										<div>DESIGNED:</div> <div>DRAFTED: LM</div> <div>ACCEPTED FOR USE: YAN XIAO TITLE: PRINCIPAL ELEC. ENGINEER DATE: 2.8.2022</div>		<div>ACCEPTANCE FORM KNET No.:</div> <div>19013728</div> <div>IN ACCORDANCE WITH DP013</div>		<div>DRAWING No.:</div> <div>S-4055</div> <div>SHEET LATITUDE</div>		<div>SHEET No.:</div> <div>77</div> <div>SHEET LONGITUDE</div>		<div>AMEND No.:</div> <div>0</div>		
No.	AMENDMENT DESCRIPTION				BY	CHECK	ACCEPTANCE	DATE	UNCONTROLLED COPY WHEN PRINTED	100 MILLIMETRES ON ORIGINAL DRAWING	ALL DIMENSIONS ARE IN METRES UNLESS SHOWN OTHERWISE		NOT TO SCALE							