

## CONSTRUCTION NEWSLETTER

OCTOBER 2017

**See our App! (Details Page 5)**



*Explore and experience what the new lowered Bowden Railway Station will look like once the construction is complete through augmented reality. (Artist impression for illustration purposes only)*

## PROJECT UPDATE

### Time to dig in!

So far, we have built three bridges, installed over 1,900 piles and have relocating over 28km of communications cabling. We now need access to the rail corridor to lower the railway lines.

To allow the future excavation works and the shaping of the new lowered Bowden Railway Station in October, the Gawler, Outer Harbor and Grange rail lines will need to be closed. **The Outer Harbor and Grange rail lines will be closed from 10pm Sunday 24 September 2017 to early December 2017. The Gawler rail line will be closed from first service Sunday 1 October 2017 and will resume from first service Monday 16 October 2017.**

This will be a critical time for the construction team. The works will consist of:

- Finalising the bridge and piling works,
- Excavating soil in the 1.5km rail corridor and,
- Installing the platforms and retaining walls required on each side of the cut at the new lowered Bowden Railway Station between Gibson Street and Park Terrace in preparation of the opening of the new lowered Bowden Railway Station by the end of December 2017.

Due to the excavation works, road users should expect a large number of trucks on War Memorial Drive, Park Terrace and Port Road to move soil from the construction site. We have carefully planned the haulage routes to minimise impact on residents and businesses, and road users.

At the end of the closure period, the new lowered railway lines will go under Park Terrace and Gibson Street, and the new lowered Bowden Railway Station will be shaped. The Torrens Rail Junction bridge will also be completed, eliminating the need for freight trains to give way to passenger trains at this location.

*(See overleaf for visual summary of the above)*

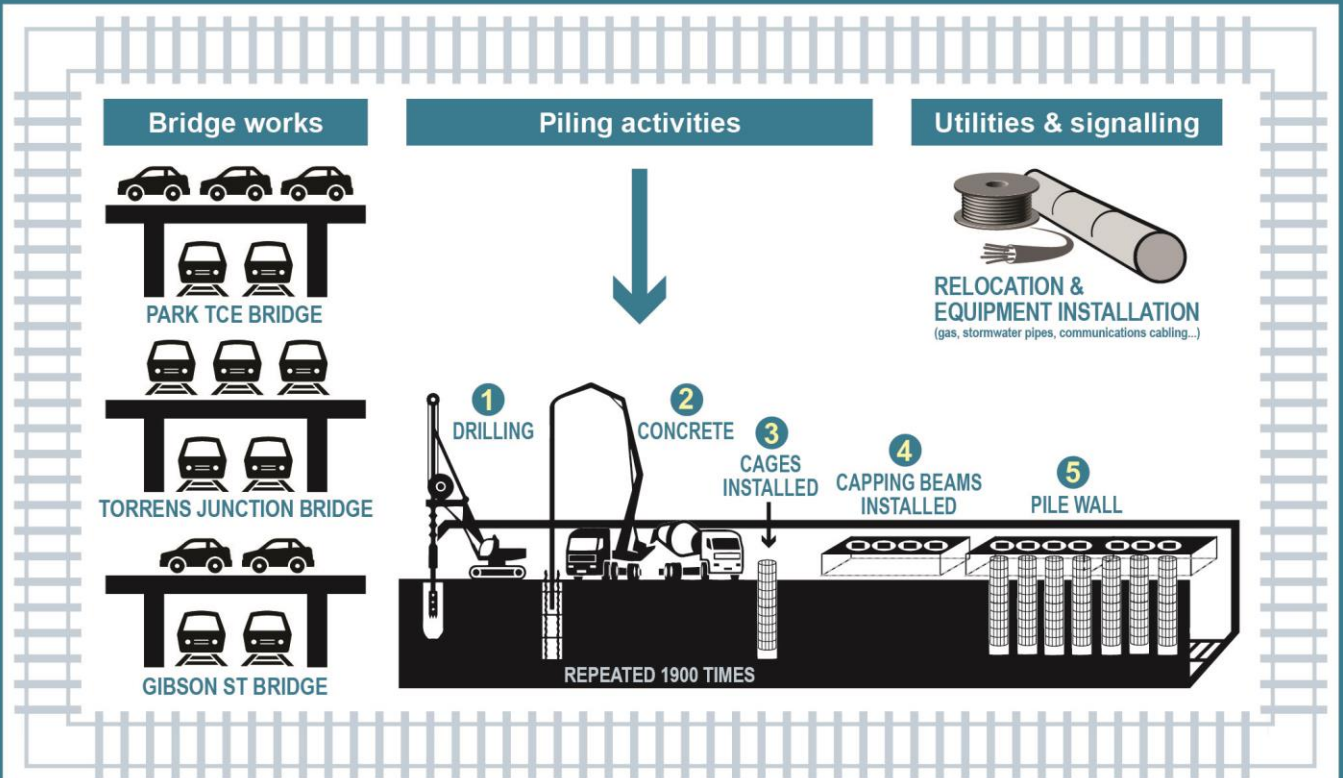
**For enquiries about the project:**

Please call 1300 582 071 or visit [www.infrastructure.sa.gov.au/TRJ](http://www.infrastructure.sa.gov.au/TRJ)

Dec 2016



On the way



Sept 2017



Upcoming

We are READY



### Scope of works:

- > Remove tracks
- > Dig and excavate
- > Finalise Torrens Junction bridge
- > Build new lowered Bowden Railway Station
- > Install drainage system
- > Reinstate tracks

> Excavate in the rail corridor from Torrens River to East Street. The excavation will occur between the two piles-walls, and under the three bridges.

APPROXIMATELY  
**112,000m<sup>3</sup>**  
SOIL EXCAVATED  
= 48 OLYMPIC SWIMMING POOLS



Dec 2017



Community Outcomes



## PROJECT BENEFITS

### South Australian benefits

In addition to separating the interstate rail line from the passenger rail line, removing three level crossings and delivering a new lowered Bowden Railway Station, this project will also support local businesses and boost the South Australian economy. Our approach to project design and construction was chosen to maximise the long term benefits to Adelaide and the people of South Australia, including:

- Targeted employment opportunities for South Australians (employing up to 212 people during each year of construction)
- Prioritising local suppliers for the purchase of critical materials such as steel (sourced from Arrium in Whyalla), concrete and quarry products
- The purchase of new construction plant/equipment, including articulated dump trucks and excavators, through local dealers

The Alliance has also proactively identified local charities to support through fundraising activities and works with small businesses adjacent the work area to procure a range of services and products.

### Pedestrian and cyclist connectivity

The project will create new connections for cyclists and pedestrians through the construction of four new pedestrian/cycle crossings in Bowden and the Park Lands over the lowered rail line, including: (*see maps overleaf*)

- Three additional pedestrian / cyclist bridges: Station Place Bridge, Field Street Bridge and the Park Lands Bridge.
- The replacement of the existing passive crossing in the Park Lands with an active level crossing, and new paths to link with existing paths within Bonython Park.

The Outer Harbor Greenway shared path will run until the Park Lands and link with existing pathways, providing a safe and efficient off-road connection for cyclists and pedestrians.

- The shared-use path connecting the Park Lands and the new lowered Bowden Railway Station will run under the Park Terrace bridge and will remove the need for pedestrians or cyclists to cross Park Terrace.
- Outer Harbor Greenway will be accessible via Gibson Street, operational at the end of 2017 and will link the Park Lands to East Street. (The T2T Alliance is ensuring the continuity towards South Road – refer to [www.T2talliance.com.au](http://www.T2talliance.com.au).)



View of shared use path towards Field Street bridge



View of shared use path towards Station Place bridge





## WORKING WITH COMMUNITY

### Local benefits

The ConneXion Alliance has also proactively identified local charities to support through fundraising activities and works with small businesses adjacent the work area to procure a range of services and products. We are proud to work alongside the residents and businesses of Bowden and appreciate the rich history and creative community of the area



Oz Harvest was chosen by employees of the ConneXion Alliance as the preferred local charity. Haley Everuss, Oz Harvest's State Manager, came onsite to provide the construction team with an overview of their work and how, collectively and individually, we can all make a difference at home and at work by reducing food waste.



## Community Sessions



We have enjoyed meeting local residents and other interested community members at our community sessions at the 'Plant 4' market.

Did you miss it? We are looking forward to see you on  
**Wednesday 4 October.**



## Download our App

Explore and experience what the new lowered Bowden Railway Station will look like once the construction is complete through augmented reality, images, videos and the latest project information. Through augmented reality technology, you can take a sneak peek of the new lowered Bowden Railway Station using your smart phone or tablet.



**To download the free app, visit the Google Play or Apple App Store and search 'LORAR+'. Download, open and then click on the 'ConneXion Alliance' button.**

Once downloaded, navigate through the map by clicking the pins, and experience 360-degree views of what the station will look like once works are complete. You can also check out progress shots/videos of construction and swipe through artist impressions.

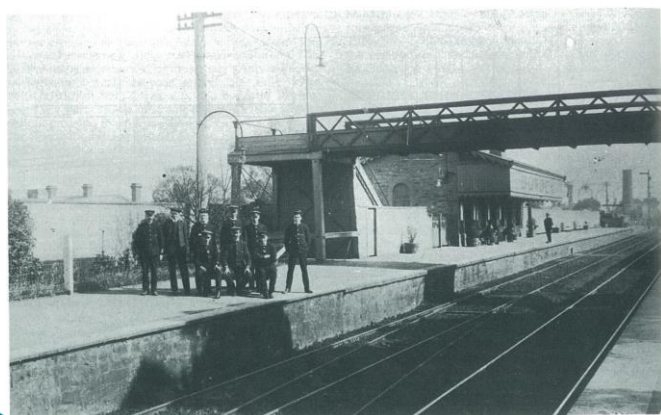
Please note that Artist's impressions are provided for illustration purposes only and whilst they are intended to represent the project as closely as possible, detailed design is ongoing and there may be some variation once the works are completed.

## SITES OF HERITAGE AND HISTORICAL SIGNIFICANCE

We are working in close proximity to the Bowden Railway Station, which opened in April 1856. Last month we replicated the 1910's photo with a few people from our team involved with the construction of the new lowered Bowden Railway Station – and provided an opportunity to meet some rail passengers and chat about the history of one of Australia's oldest stations.

c1910

2017



Staff of the Bowden Railway Station  
(Source: Hindmarsh Historical Society)



Construction staff at Bowden Railway Station

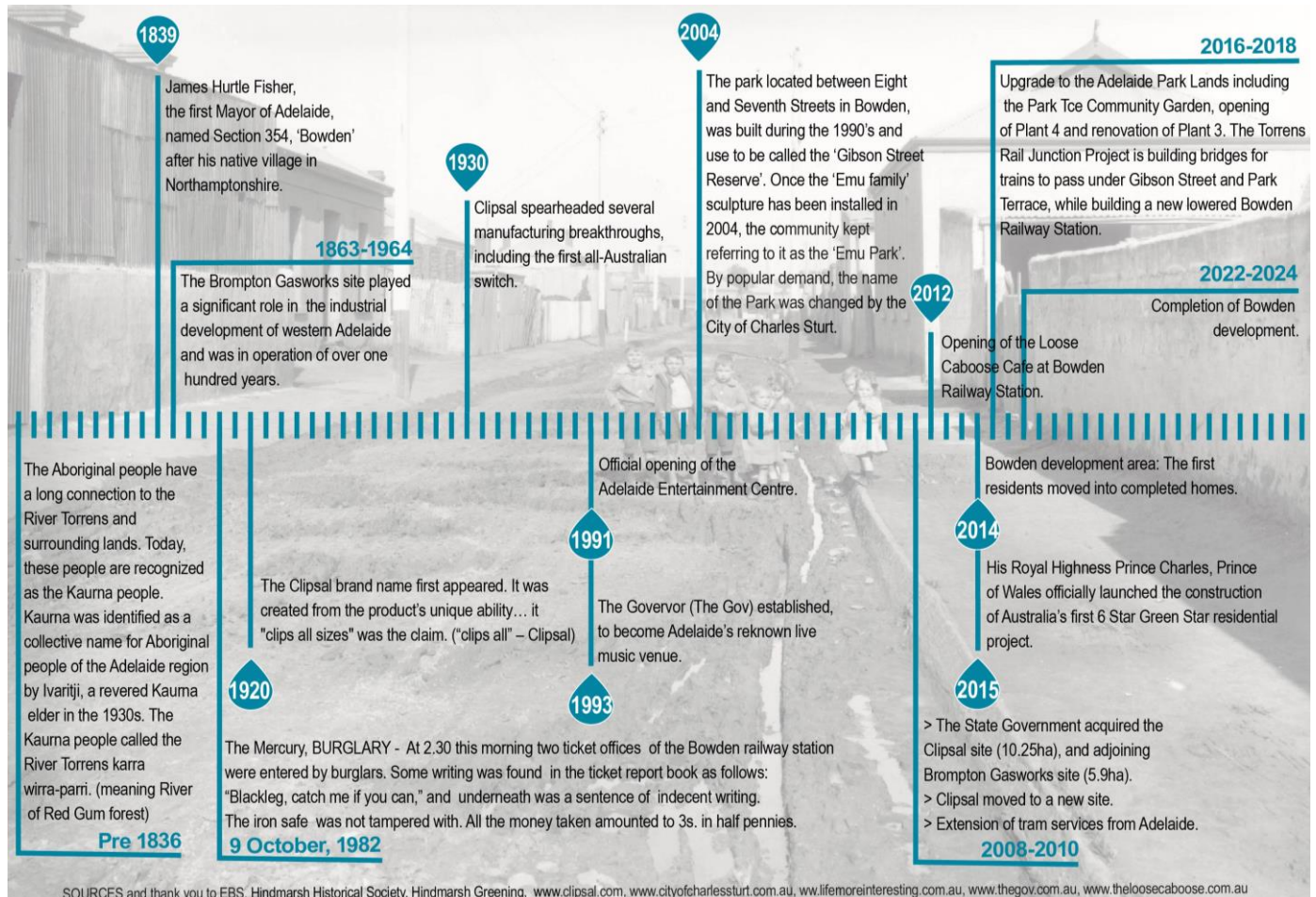
**For enquiries about the project:**

Please call 1300 582 071 or visit [www.infrastructure.sa.gov.au/TRJ](http://www.infrastructure.sa.gov.au/TRJ)



## Celebrating local heritage – From 1839 to today

We are also working in close proximity to South Australia's heritage and historic significance sites such as the Clipsal site, the Brompton Gasworks and the Bowden Railway Station. We have gathered for you a summary of the Bowden's history – see below.



## COMMUNITY ENGAGEMENT

Our Community Engagement Team is regularly meeting with local residents, businesses and community groups to discuss the project and answer questions on the planned construction activities. We will be holding regular community information stands at the 'Plant 4' Market on Wednesday nights throughout the year – please check the website or social media for dates of upcoming sessions.

**BUSINESS  
AS  
USUAL**

While works are being undertaken, it is business as usual for local businesses in Bowden, Brompton and Hindmarsh. The ConneXion Alliance will ensure that access to these businesses is maintained and that disruptions are minimised as much as possible. Should you have any questions or wish to provide feedback, please do not hesitate to contact us.

### For more information and enquiries:

Visit: [www.infrastructure.sa.gov.au/TRJ](http://www.infrastructure.sa.gov.au/TRJ)  
Email: [DPTI.TRJ@sa.gov.au](mailto:DPTI.TRJ@sa.gov.au)  
Call: 1300 582 071

You can also go to Facebook ([facebook.com/DPTISA](https://facebook.com/DPTISA)) or Twitter ([twitter.com/DPTISA](https://twitter.com/DPTISA)) for regular post about the works.

**metromATE**  
The official Adelaide Metro app

Now available on Apple and Android!

Download the free public transport app, for real-time information about services and details of disruptions or delays. [www.adelaidemetro.com.au/metro-mate](http://www.adelaidemetro.com.au/metro-mate)

**For enquiries about the project:**

Please call 1300 582 071 or visit [www.infrastructure.sa.gov.au/TRJ](http://www.infrastructure.sa.gov.au/TRJ)