



# Gawler Rail Electrification Project

## Pedestrian Crossing Upgrade, Brown Terrace, Salisbury

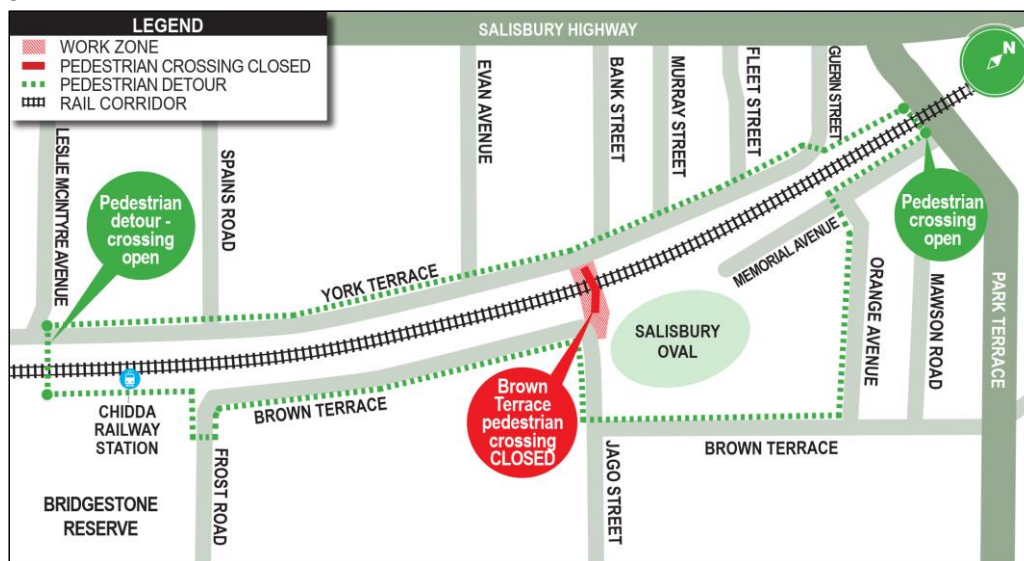
As part of the Gawler Rail Electrification Project, the existing pedestrian crossing at Brown Terrace will be replaced with a new active pedestrian crossing in the same location.

The activation of the crossing will be completed in two stages. The first stage of works involves the construction of a new pedestrian maze and path. The existing pedestrian crossing at Brown Terrace will be temporarily closed while this work is carried out.

**When:** The first stage of works will commence from **Monday, 5 July 2021** and take approximately four weeks to complete, weather permitting. Works will take place from 7am to 7pm Monday to Saturday each week.

**Location:** Brown Terrace pedestrian crossing, Salisbury (refer to map).

**Pedestrian access and detours:** Pedestrian access will be maintained at all times via the southern pedestrian crossing at Chidda Railway Station and Park Terrace, Salisbury. Please observe signage and directions from traffic controllers.



**What you can expect:** Some noise, dust and vibrations may be experienced from construction machinery. Every effort will be made to minimise disruption to residents and pedestrians during these works.

For more information, please call 1300 080 834, email [dit.gawlerelectrification@sa.gov.au](mailto:dit.gawlerelectrification@sa.gov.au) or visit [www.dit.sa.gov.au/grep](http://www.dit.sa.gov.au/grep). Follow [www.facebook.com/DFITSA/](https://www.facebook.com/DFITSA/) for project updates, or register your details to receive project updates directly at [www.dit.sa.gov.au/grep](http://www.dit.sa.gov.au/grep)

Kind regards

**Gawler Rail Electrification Project Team**

[dit.sa.gov.au](http://dit.sa.gov.au)

Follow us on:



Australian Government

**BUILDING OUR FUTURE**



Government  
of South Australia



**BUILDING  
WHAT MATTERS**