



APPENDIX N

PREDICTED RAILWAY NOISE FIGURES



COPYRIGHT

Copyright © Iron Road Limited, 2015

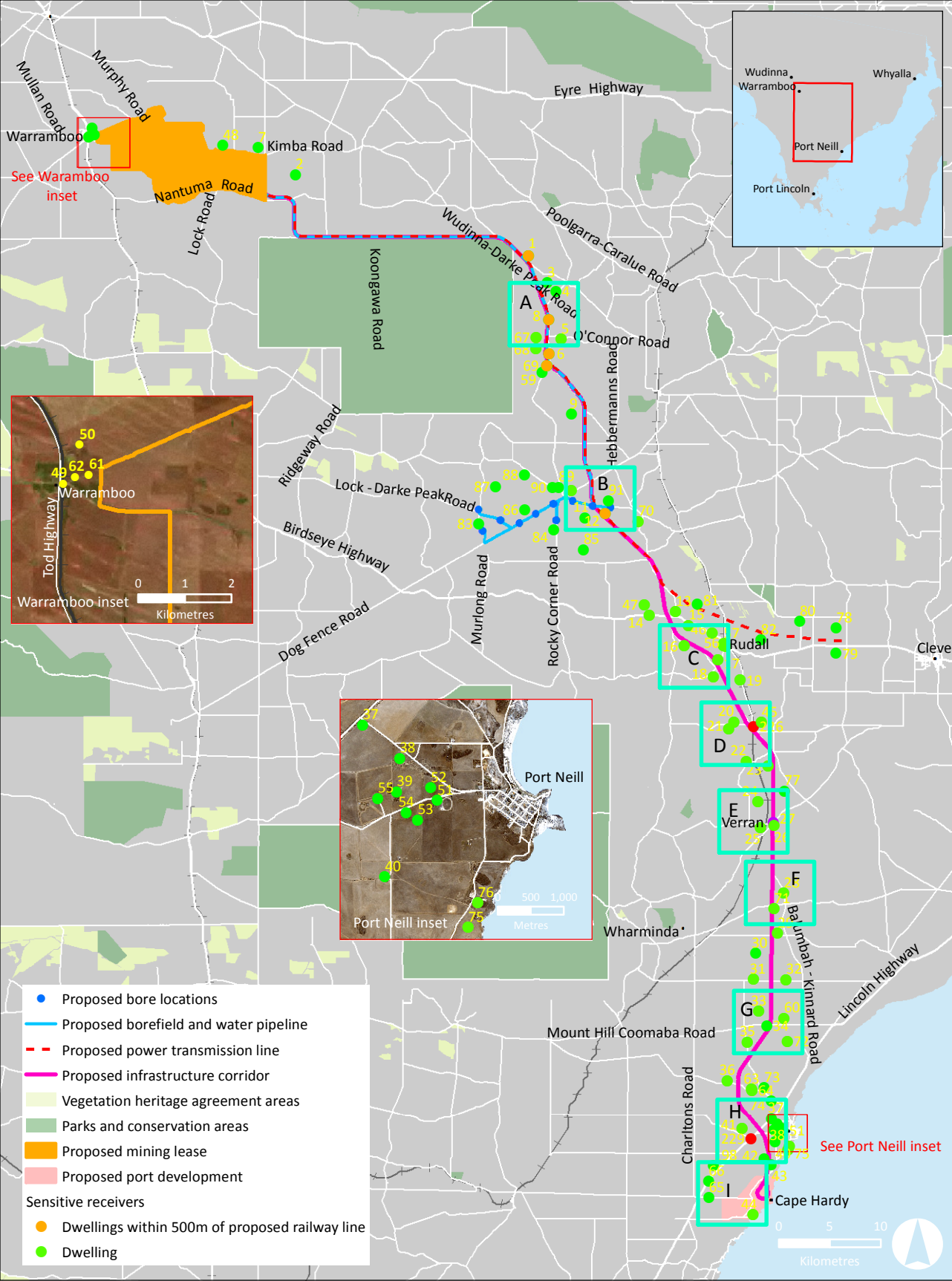
All rights reserved

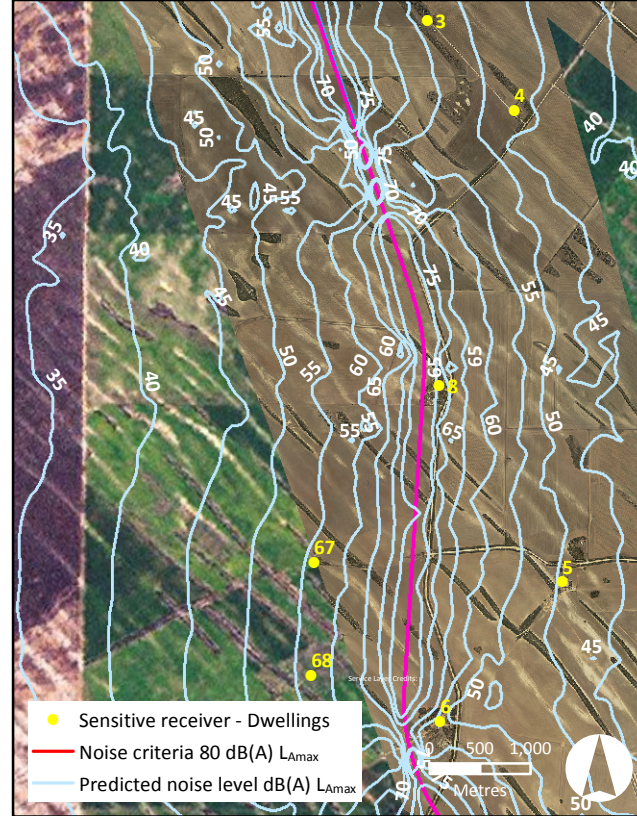
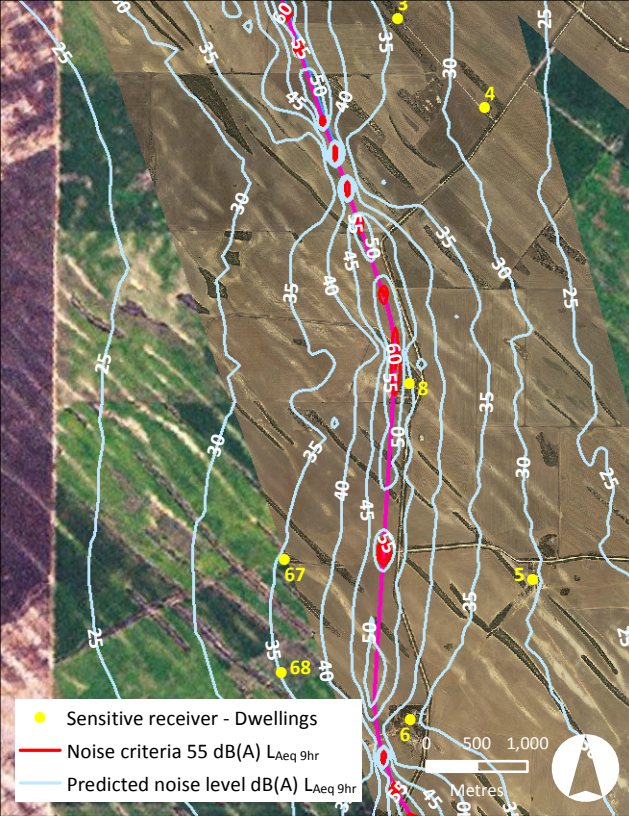
This document and any related documentation is protected by copyright owned by Iron Road Limited. The content of this document and any related documentation may only be copied and distributed for the purposes of section 46B of the *Development Act, 1993 (SA)* and otherwise with the prior written consent of Iron Road Limited.

DISCLAIMER

Iron Road Limited has taken all reasonable steps to review the information contained in this document and to ensure its accuracy as at the date of submission. Note that:

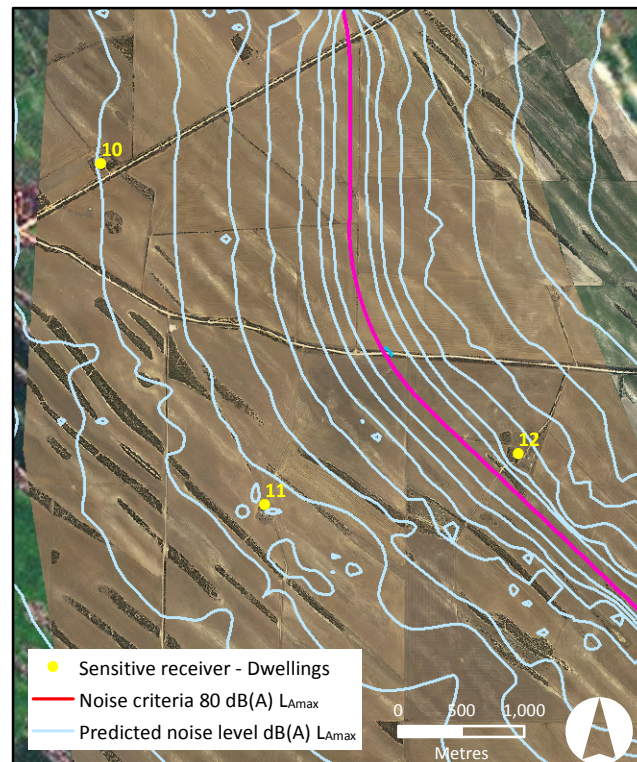
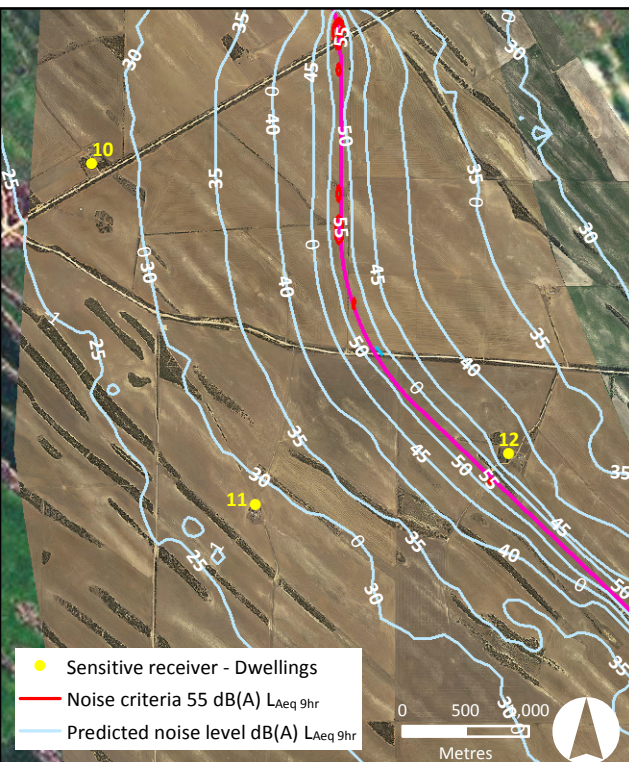
- (a) in writing this document, Iron Road Limited has relied on information provided by specialist consultants, government agencies, and other third parties. Iron Road Limited has reviewed all information to the best of its ability but does not take responsibility for the accuracy or completeness; and
- (b) this document has been prepared for information purposes only and, to the full extent permitted by law, Iron Road Limited, in respect of all persons other than the relevant government departments, makes no representation and gives no warranty or undertaking, express or implied, in respect to the information contained herein, and does not accept responsibility and is not liable for any loss or liability whatsoever arising as a result of any person acting or refraining from acting on any information contained within it.





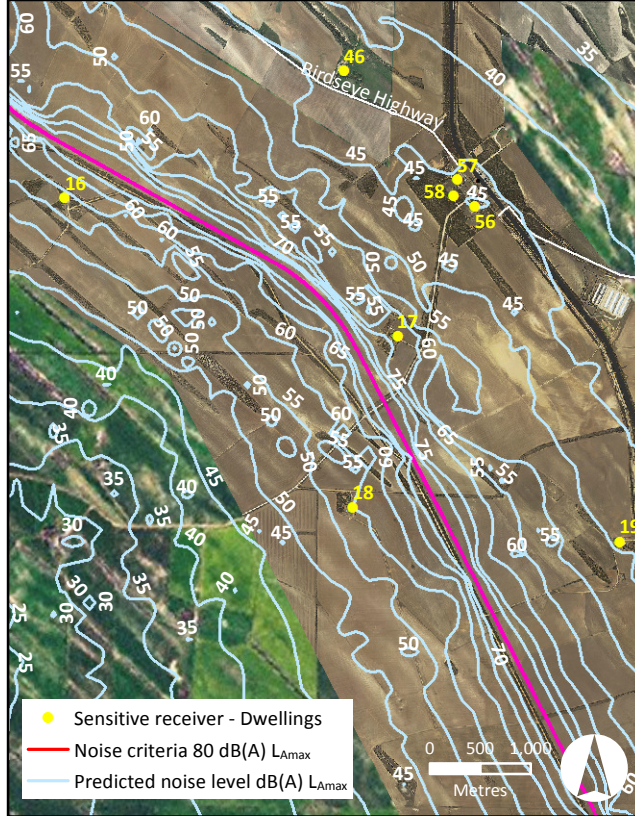
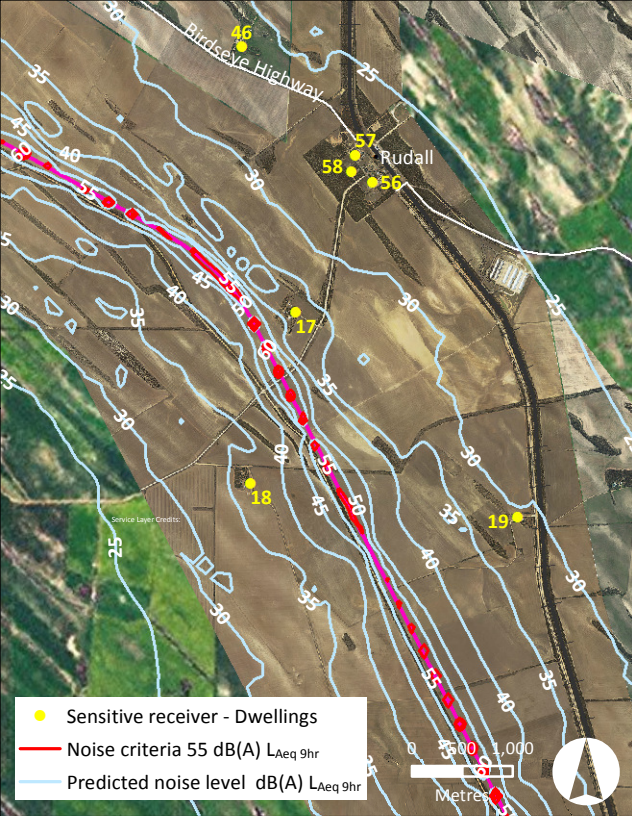
Appendix J Figure 2- Enlargement A Predicted train noise levels (dB(A)) Night time $L_{Aeq\ 9hr}$

Appendix J Figure 3 - Enlargement A Predicted train noise levels (dB(A)) Night time L_{Amax}



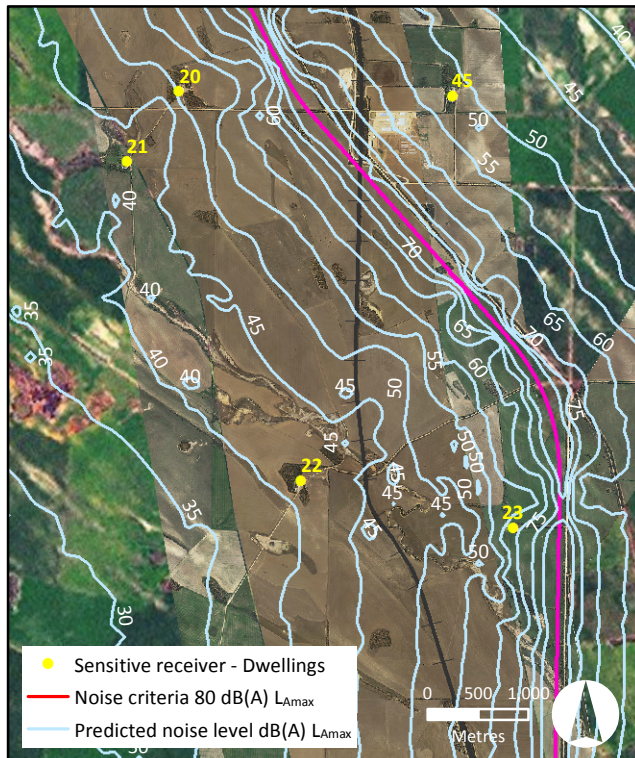
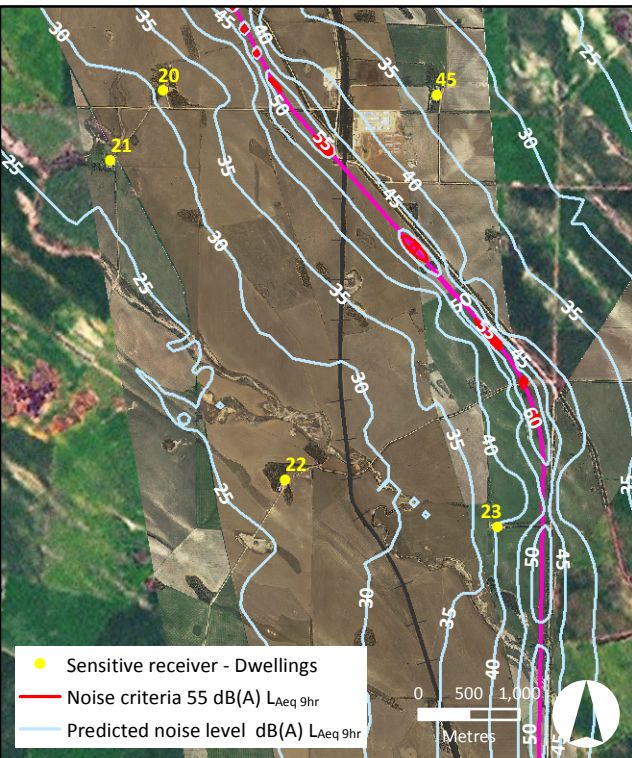
Appendix J Figure 4 - Enlargement B Predicted train noise level (dB(A)) Night time $L_{Aeq\ 9hr}$

Appendix J Figure 5 - Enlargement B Predicted train noise levels (dB(A)) Night time L_{Amax}



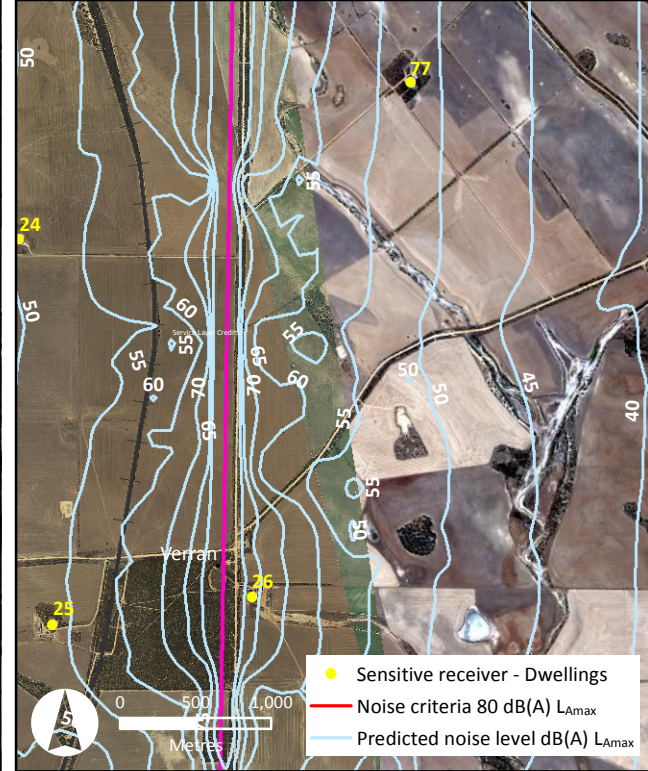
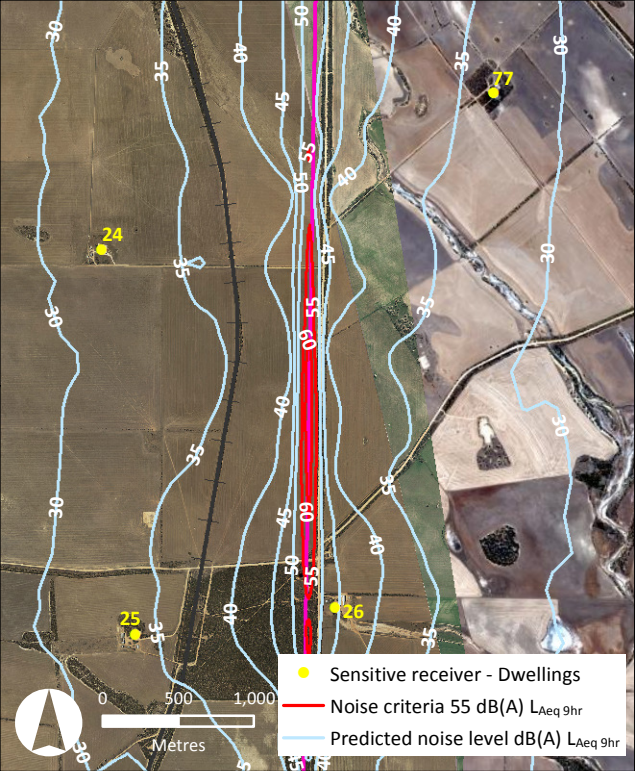
Appendix J Figure 6 Enlargement C Predicted train noise levels (dB(A)) Night time $L_{Aeq\ 9hr}$

Appendix J Figure 7- Enlargement C Predicted train noise levels (dB(A)) Night time L_{Amax}



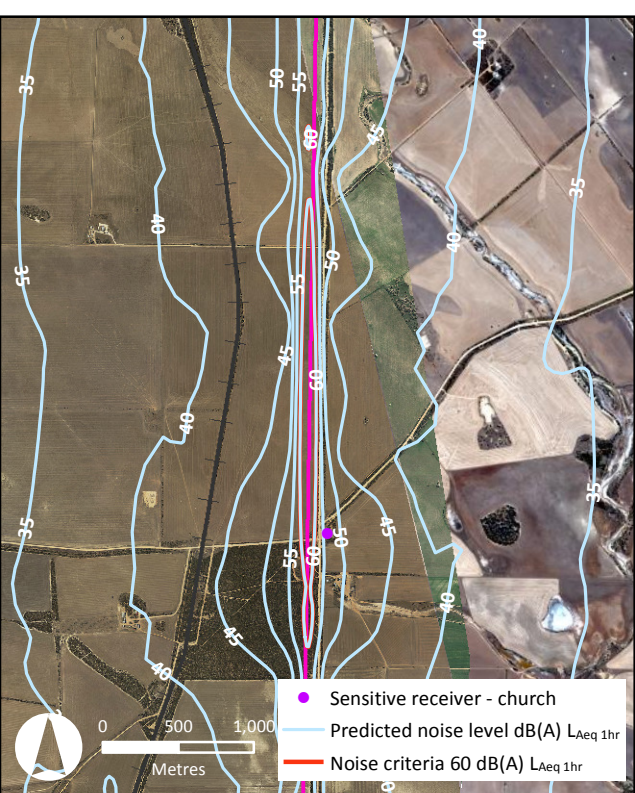
Appendix J Figure 8 - Enlargement D Predicted train noise levels (dB(A)) Night time $L_{Aeq\ 9hr}$

Appendix J Figure 9 - Enlargement D Predicted train noise levels (dB(A)) Night time L_{Amax}



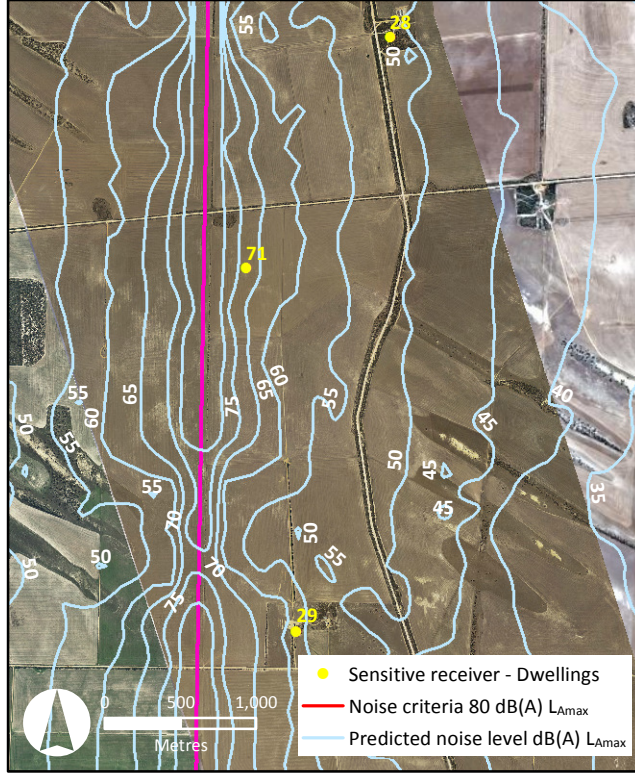
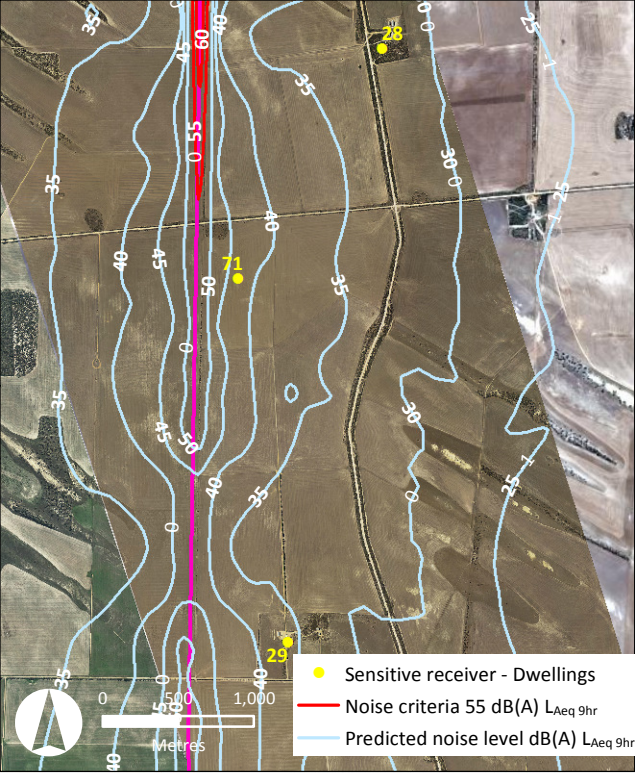
Appendix J Figure 10 - Enlargement E Predicted train noise levels (dB(A)) Night time $L_{Aeq 9hr}$

Appendix J Figure 11 - Enlargement E Predicted train noise levels (dB(A)) Night L_{Amax}



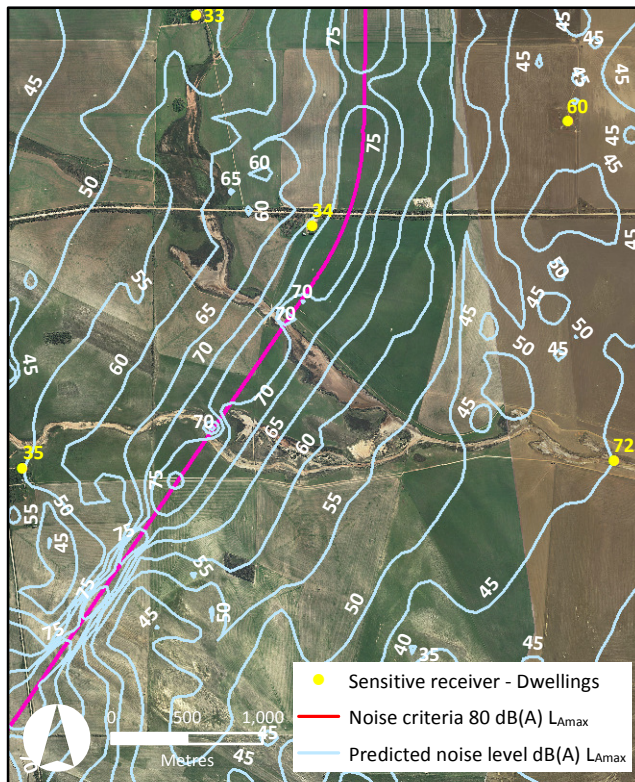
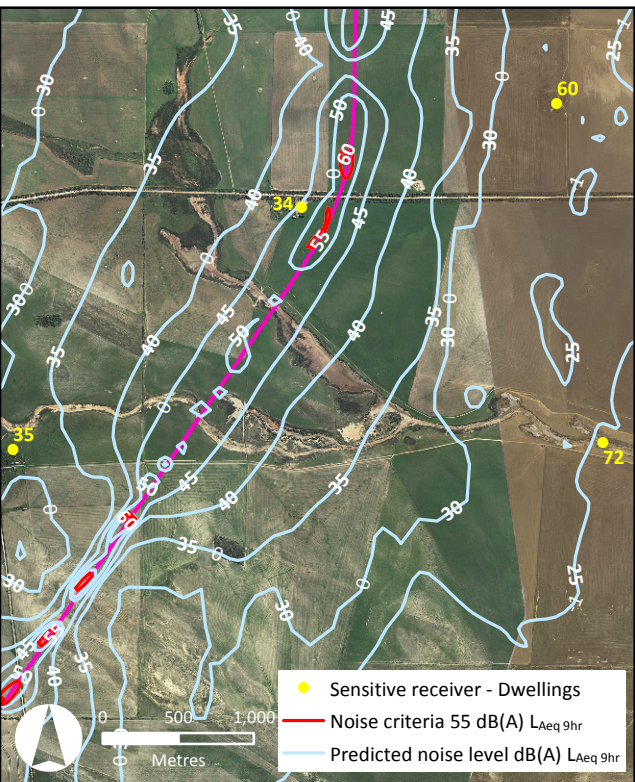
Appendix J Figure 12 - Enlargement E Predicted train noise levels (dB(A)) Night $L_{Aeq 1hr}$

Service Layer Credits: Source: Esri, i-cubed, USDA, USGS, AEX, GeoEye, Getmapping, Aerogrid, IGN, IGP, and the GIS User Community



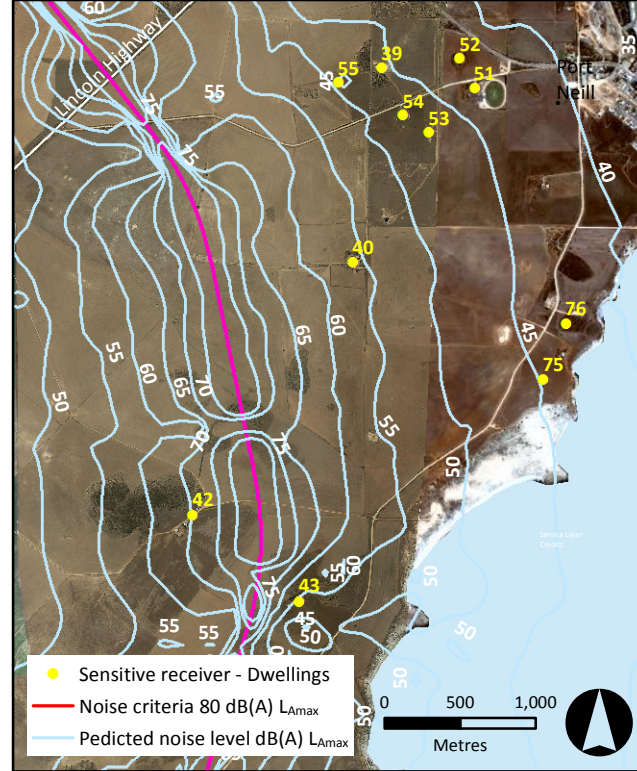
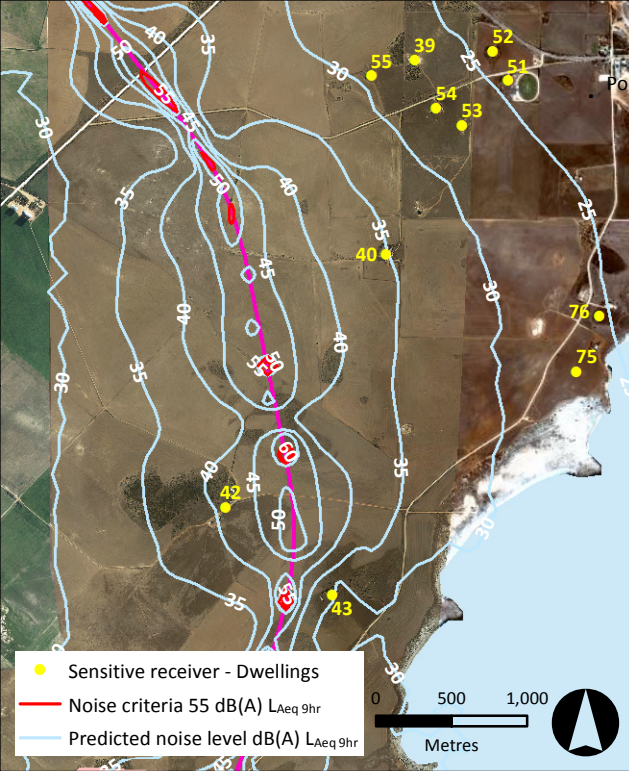
Appendix J Figure 13- Enlargement F Predicted train noise levels (dB(A)) Night time $L_{Aeq\ 9hr}$

Appendix J Figure 14 - Enlargement F Predicted train noise levels (dB(A)) Night L_{Amax}



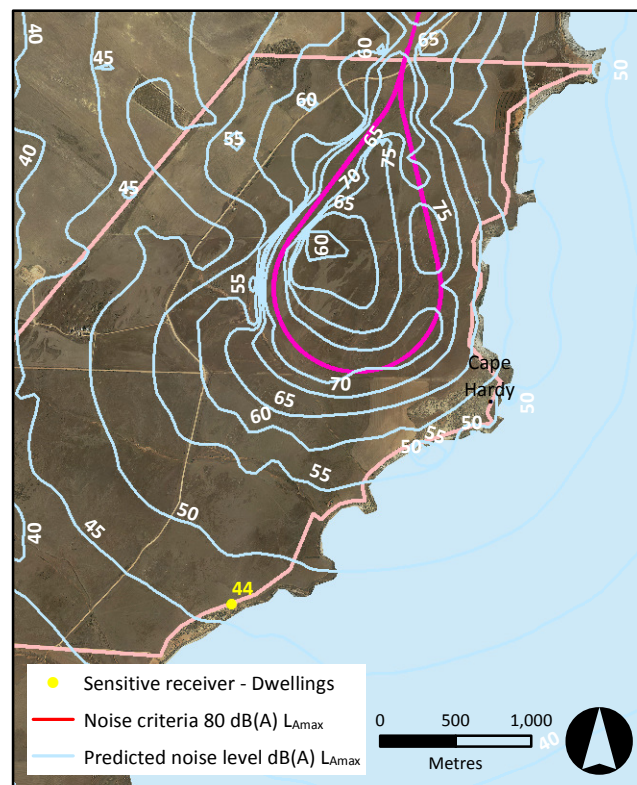
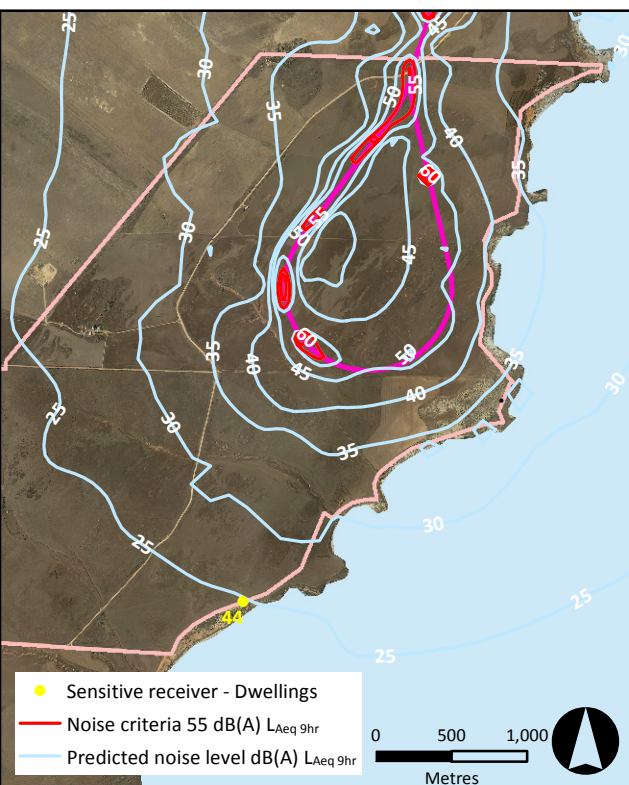
Appendix J Figure 15 - Enlargement G Predicted train noise levels (dB(A)) Night $L_{Aeq\ 9hr}$

Appendix J Figure 16 - Enlargement G Predicted train noise levels (dB(A)) Night L_{Amax}



Appendix J Figure 17 - Enlargement H Predicted train noise levels (dB(A)) Night time $L_{Aeq\ 9hr}$

Appendix J Figure 18 - Enlargement H Predicted train noise levels (dB(A)) Night L_{Amax}



Appendix J Figure 19 - Enlargement I Predicted train noise levels (dB(A)) Night $L_{Aeq\ 9hr}$

Appendix J Figure 20 - Enlargement I Predicted train noise levels (dB(A)) Night L_{Amax}