

## CONSTRUCTION NEWSLETTER

EDITION NO.1 | JUNE 2017

### PROJECT OVERVIEW



Artist Impression: New lowered Bowden Railway Station, view from Park Terrace

The ConneXion Alliance, comprising of Laing O'Rourke, AECOM and KBR, was announced in December 2016 to deliver the Torrens Rail Junction Project. The \$238 million (\$189.4m Australia Government funded and \$48.6m South Australia Government funded) project will separate the interstate freight rail line from the Outer Harbor passenger rail line in the Park Lands and take the rail line under Park Terrace at Bowden. A new, lowered railway station will be built at Bowden, improving pedestrian connections to the Bowden Village, Entertainment Centre and Park Lands. The project will increase the efficiency of the national rail freight network, reduce traffic delays on Park Terrace, Port Road and on the adjacent road network and deliver improved pedestrian and cycling connectivity in Bowden and the Park Lands.

### TIMELINE

The Alliance has developed a program of works to minimise disruption to rail passengers, freight rail services, local residents and businesses across the project area as much as possible. The timeline adjacent illustrates the key project milestones. In addition to April and October temporary rail closures, passengers can expect additional temporary rail closures over weekends in June, July, August and November 2017 to allow works within the rail corridor. Advance notice will be provided ahead of these closures.

#### KEY MILESTONES

##### Dec 2016



ConneXion Alliance of Laing O'Rourke AECOM and KBR announced as main works contractors

##### Jan 2017



Set up in Bowden and beginning of early works

##### Apr 2017



Construction of Park Terrace road bridges structure and piling along rail corridor

##### Oct 2017



Construction of Park Terrace and Park Lands bridges, lowered Outer Harbor and Grange rail lines and new Bowden Railway Station

##### Dec 2017



New lowered rail line operational



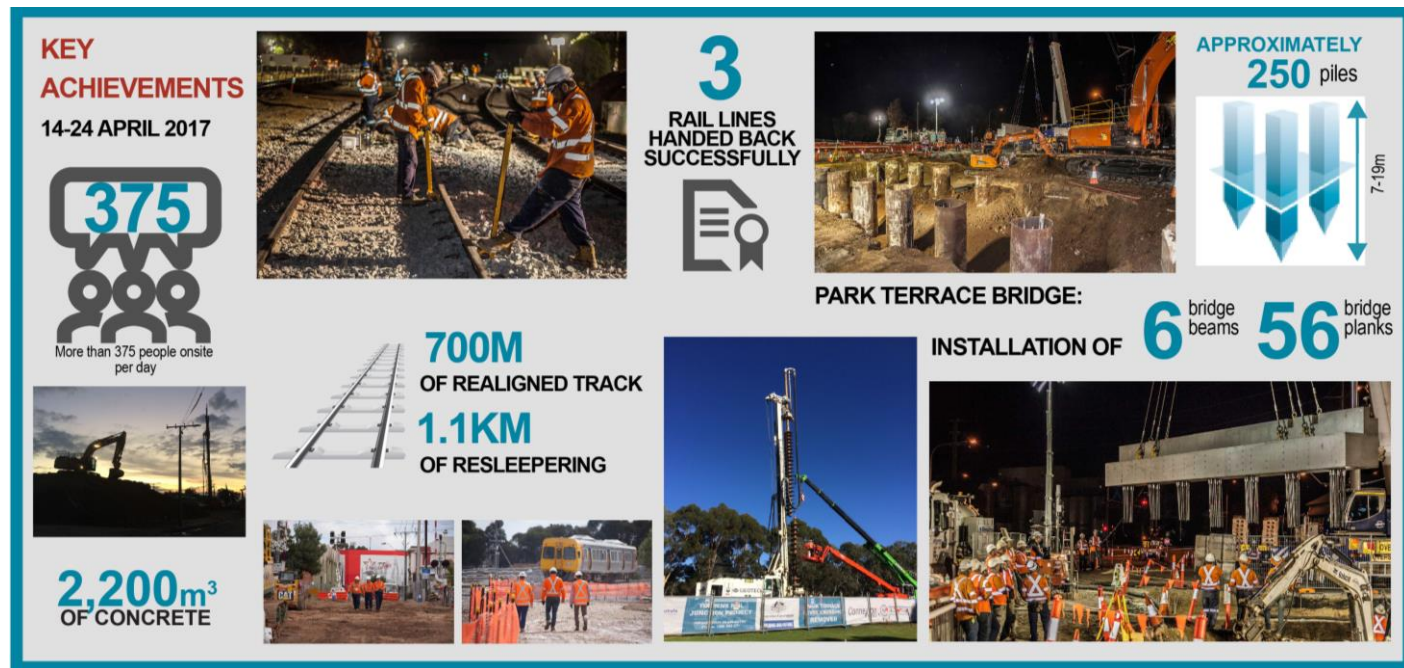
**For enquiries about the project:**

Please call 1300 582 071 or visit [www.infrastructure.sa.gov.au/TRJ](http://www.infrastructure.sa.gov.au/TRJ)

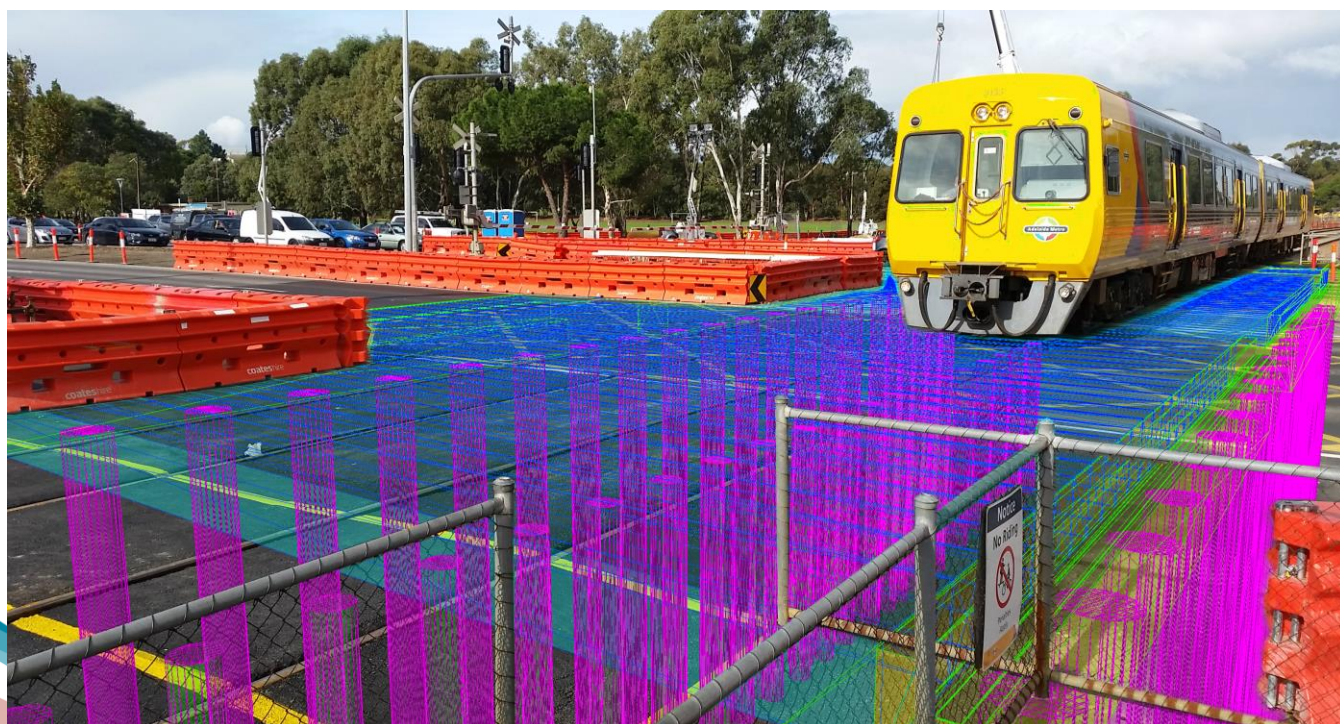


## Key activities in April 2017

The ConneXion Alliance successfully delivered their first key milestone during the closure of the rail corridor between 14 – 24 April 2017. The key achievements are shown below.



While the surface may look the same, the subsurface of the Park Terrace level crossing has changed dramatically, as shown below. We installed 6 bridge beams (green element), 56 bridge planks (blue element) and more than 66 piles (pink elements) for the construction of the bridge structure for the future lowered rail line.



Park Terrace level crossing showing works completed 14 – 24 April 2017



## PROJECT BENEFITS

### State and national economy

- Improving efficiency of our national rail freight, removing a congestion point in the network.
- Reduced traffic delays on the Inner Ring Route (Park Terrace).
- Over 90% local industry participation in construction.

### Improved safety

- Removal of level crossings on Park Terrace, Gibson Street and East Street in Bowden.
- New shared path under Park Terrace for cyclists and pedestrians.
- Three new pedestrian bridges across the rail corridor in Bowden and the Park Lands.
- Lowered rail line in the Park Lands with new safety fencing (approximately 1.4 kilometres).

### Social facilities

- Landscaping and local design features at the new Bowden Railway Station and on Park Terrace.
- New tree and garden planting in the Park Lands.
- A modern lowered Bowden Railway Station with improved community connectivity whilst complementing the existing heritage station building (one of the oldest in Australia).



## WORKING WITH COMMUNITY

### West Adelaide Hellas Soccer Club

The ConneXion Alliance has been working closely with the West Adelaide Hellas Soccer Club to minimise disruption from construction activities in the Park Lands. The design ensures the club can continue to operate its three pitches without impact and five-metre-high fencing behind the goals was installed to prevent soccer balls entering the work

zone. The Alliance also donated 100 new soccer balls to the club at an event, with the Hon Stephen Mullighan MP, the Hon Peter Malinauskas MLC and local State Member, the Hon Michael Atkinson MP on 9 March 2017.



Keeping the next generation of West Adelaide Hellas soccer players safe

**For enquiries about the project:**

Please call 1300 582 071 or visit [www.infrastructure.sa.gov.au/TRJ](http://www.infrastructure.sa.gov.au/TRJ)

## PRESERVING OUR HISTORY



Artist impression: View of the old Bowden Railway Station building and the new Station Place pedestrian bridge

In recognition of the significance of the heritage listed Bowden Railway Station building the project team has been working on design and engineering solutions to preserve the building during construction, and to integrate it in the final urban design.

The Bowden Railway Station is one of the three original stations established when the first steam railways opened in April 1856. The station building is one of the two surviving original station buildings - the other being at Alberton.



Bowden Railway Station c 1908 (Source: Hindmarsh Historical Society)

The ConneXion Alliance worked with Heritage SA and key stakeholders on the design of the future Station Place pedestrian bridge to retain the existing link between Bowden and Hindmarsh and preserve the station's historical significance in the community. The team has also been working with Renewal SA to maximise pedestrian connectivity with the urban development underway at Bowden Village.

## COMMUNITY ENGAGEMENT

Our Community Engagement Team is regularly meeting with local residents, businesses and community groups to discuss the project and answer questions on the planned construction activities. We will be holding regular community information stands at the 'Plant 4' Market on Wednesday nights throughout the year – please check the website or social media for dates of upcoming sessions.

**BUSINESS  
AS  
USUAL**

While works are being undertaken, it is business as usual for local businesses in Bowden, Brompton and Hindmarsh. The ConneXion Alliance will ensure that access to these businesses is maintained and that disruptions are minimised as much as possible. Should you have any questions or wish to provide feedback, please do not hesitate to contact us.

### For more information and enquiries:

Visit: [www.infrastructure.sa.gov.au/TRJ](http://www.infrastructure.sa.gov.au/TRJ)  
Email: [DPTI.TRJ@sa.gov.au](mailto:DPTI.TRJ@sa.gov.au)  
Call: 1300 582 071

You can also go to Facebook ([facebook.com/DPTISA](https://facebook.com/DPTISA)) or Twitter ([twitter.com/DPTISA](https://twitter.com/DPTISA)) for regular post about the works.

**metromATE**  
The official Adelaide Metro app

**Now available on Apple and Android!**

Download the free public transport app, for real-time information about services and details of disruptions or delays. [www.adelaidemetro.com.au/metro-mate](http://www.adelaidemetro.com.au/metro-mate)

**For enquiries about the project:**

Please call 1300 582 071 or visit [www.infrastructure.sa.gov.au/TRJ](http://www.infrastructure.sa.gov.au/TRJ)