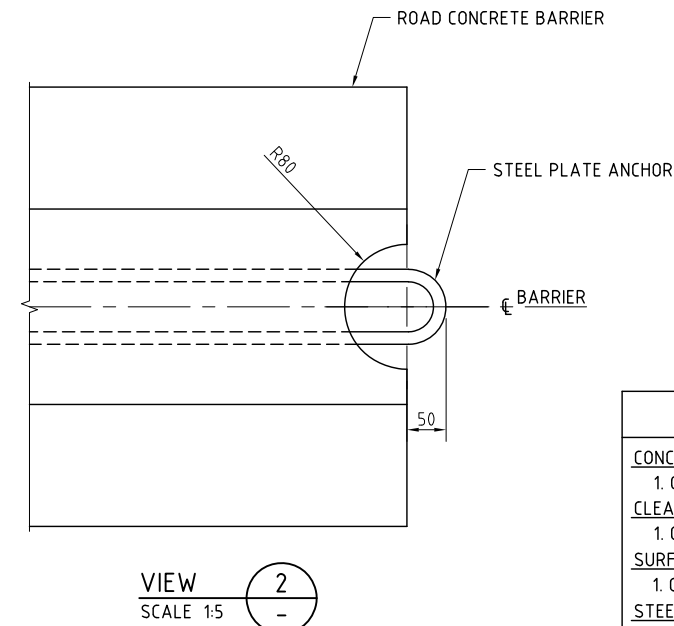
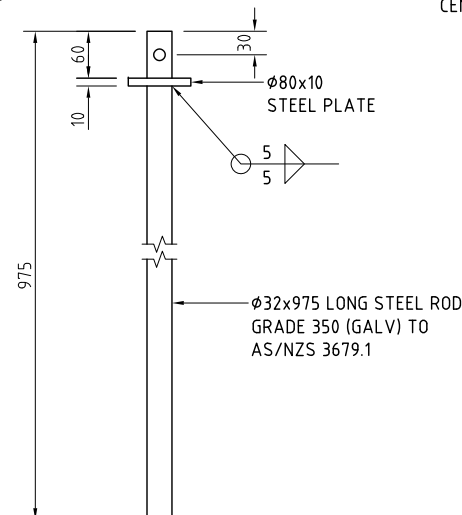


△ 1100mm HIGH ROAD CONCRETE BARRIER
SCALE 1:10



VIEW 2
SCALE 1:5



CONNECTING PIN
SCALE 1:5

CONCRETE

1. GRADE S32 AS SPECIFIED IN DTEI SPECIFICATION.

CLEAR COVER

1. COVER TO BE 35mm, UNLESS OTHERWISE SHOWN.

SURFACE FINISH

1. CONCRETE FINISHES SHALL BE IN ACCORDANCE WITH AS 3610 CLASS 2.

STEELWORK

1. STEELWORK SHALL BE GRADE 350 AND COMPLY WITH AS/NZS 3678 UNLESS NOTED OTHERWISE, WELDING SHALL CONFORM TO AS/NZS 1554.1 2004.

TRANSPORT AND HANDLING

a) A SPREADER SHALL BE USED TO ENSURE THAT SLINGS ARE ALWAYS VERTICAL DURING LIFTING AND PLACING THE BARRIER UNITS.

b) BARRIER UNITS SHALL BE TRANSPORTED AND STORED ON TIMBER BEARERS POSITIONED UNDER LIFTING POINTS.

LIFTING ANCHORS

1. LIFTING ANCHORS SHALL BE HOT DIP GALVANIZED IN ACCORDANCE WITH AS/NZS 4680. APPROXIMATE WEIGHT OF BARRIER UNITS: 4.0t (MAY VARY ±20%)


TOLERANCE & INSTALLATION

- VERTICAL -0mm, +20mm

- ALL OTHER SLIP FORMED TOLERANCES AS PER TABLE 5.7.5, AS3845.1 (2015).

TEST LEVEL

1. TEST LEVELS (TL) NOTED ARE IN ACCORDANCE WITH THE MANUAL FOR ASSESSING SAFETY HARDWARE (MASH).

DESIGNED	 <p style="text-align: center;">Government of South Australia</p> <hr/> <p>Department for Infrastructure and Transport</p>	STANDARD DRAWING								
QUALIFICATION DATE: DD/MM/YYYY		Δ 1100mm HIGH, TL5 ROAD CONCRETE BARRIER								
REVIEWER										
QUALIFICATION DATE: DD/MM/YYYY										
INDEPENDENT DESIGN CERTIFIER (IF REQUIRED)										
QUALIFICATION DATE: DD/MM/YYYY										
UNCONTROLLED COPY WHEN PRINTED		DESIGNED: A.P.	DRAFTED: H.D.	ACCEPTED FOR USE: P. MOLLOY	ACCEPTANCE FORM KNET No.: 5551523	DRAWING No.: S - 4064	SHEET No.: 2	AMEND No.: 2		
	CHECKED: A.P.	REVIEWED: P.M.	DATE: 25/5/2011		LATITUDE:		LONGITUDE:			