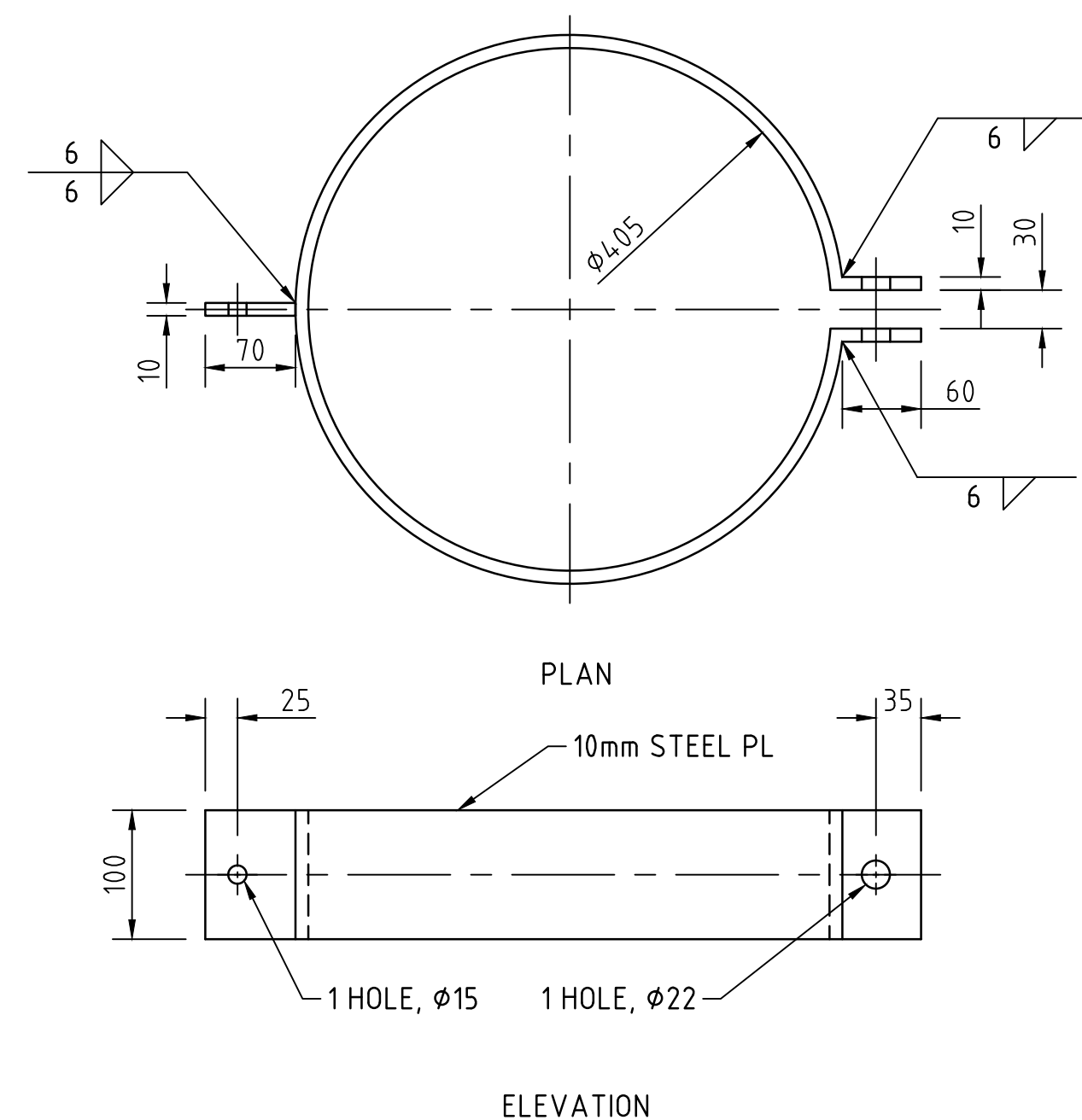
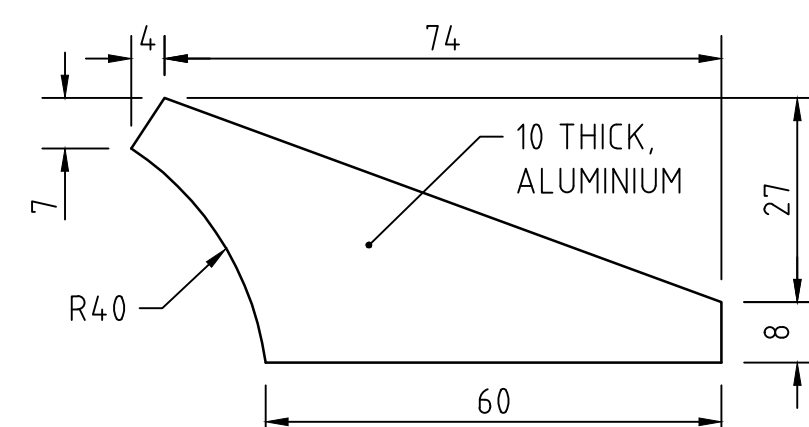


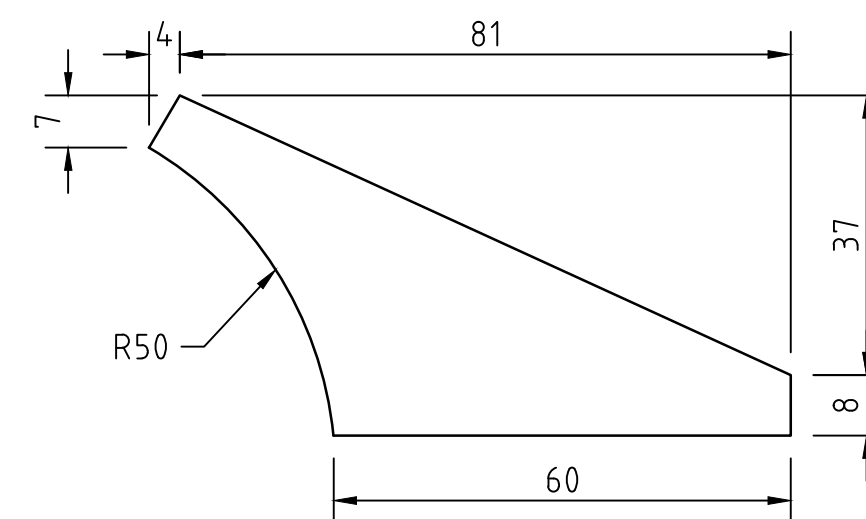
△△△ ASSEMBLY
SCALE 1:20



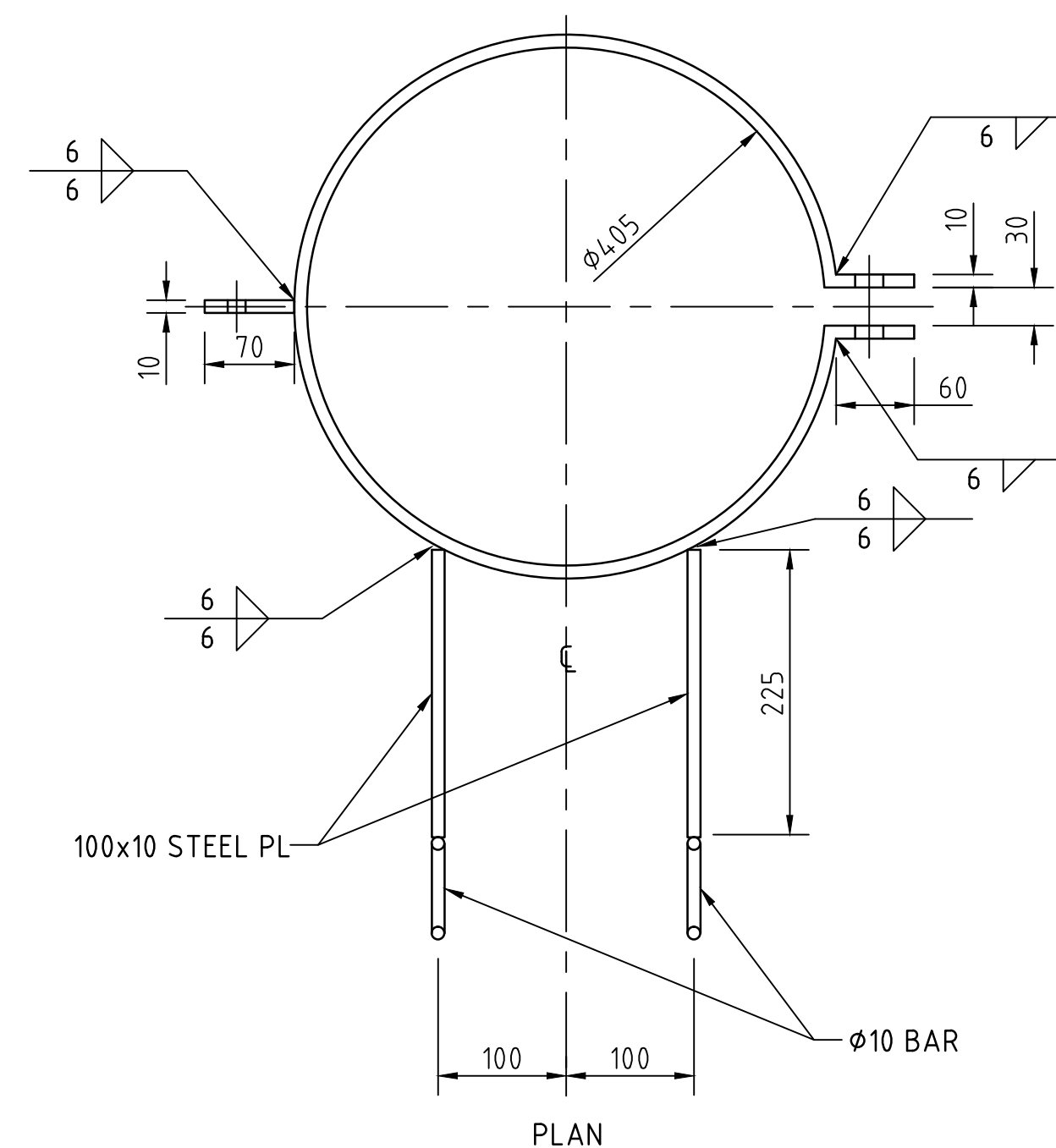
△ POST CLAMP
SCALE 1:5
1 REQUIRED PER PILE



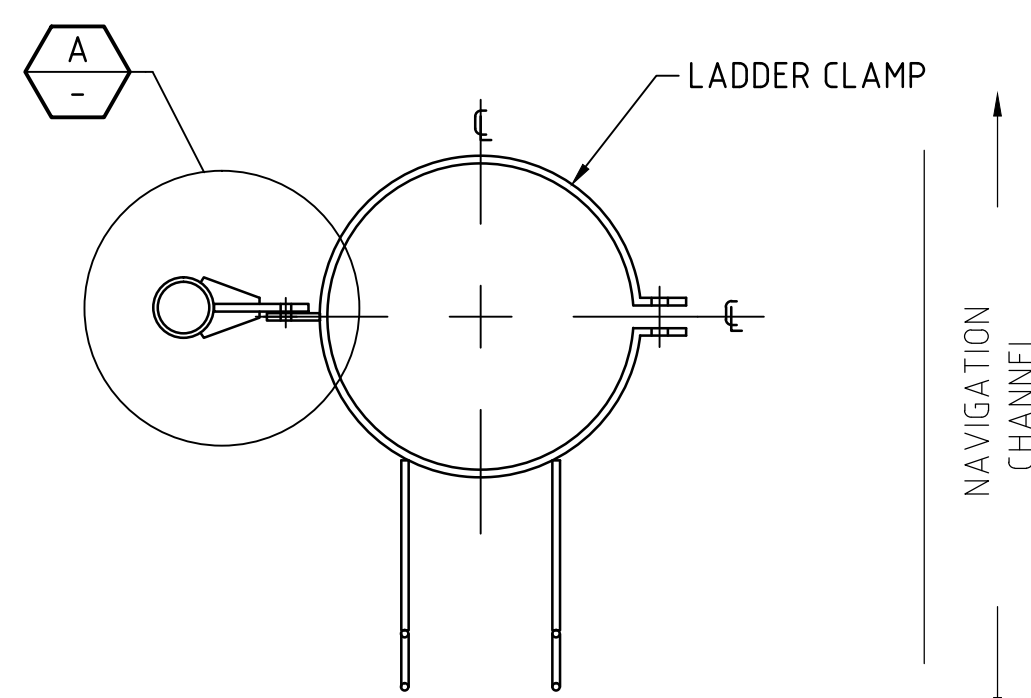
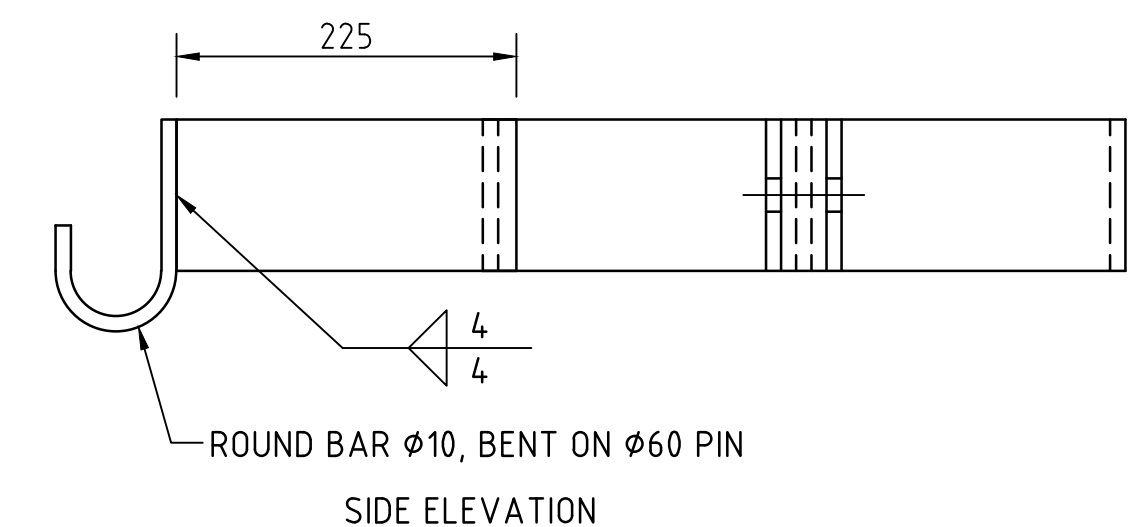
FOR Ø80 DAYMARK POST
△ STIFFENER
SCALE 1:1



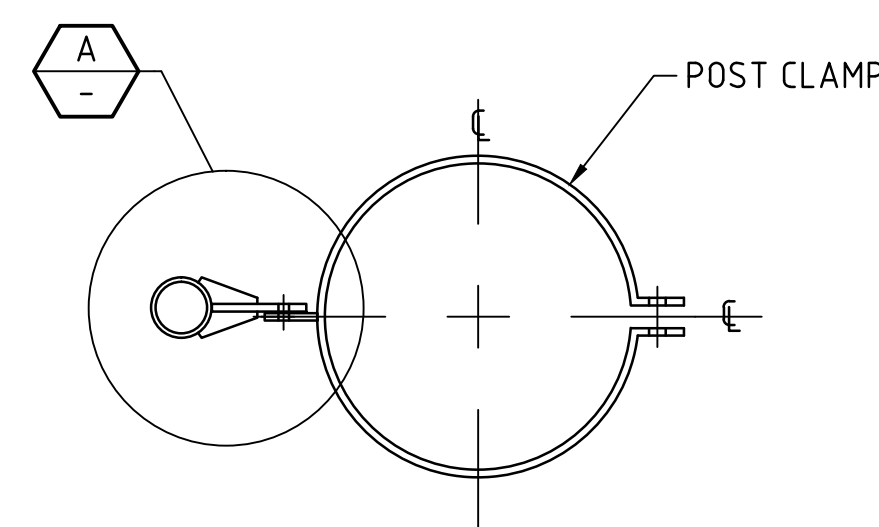
FOR Ø100 DAYMARK POST
△ STIFFENER
SCALE 1:1



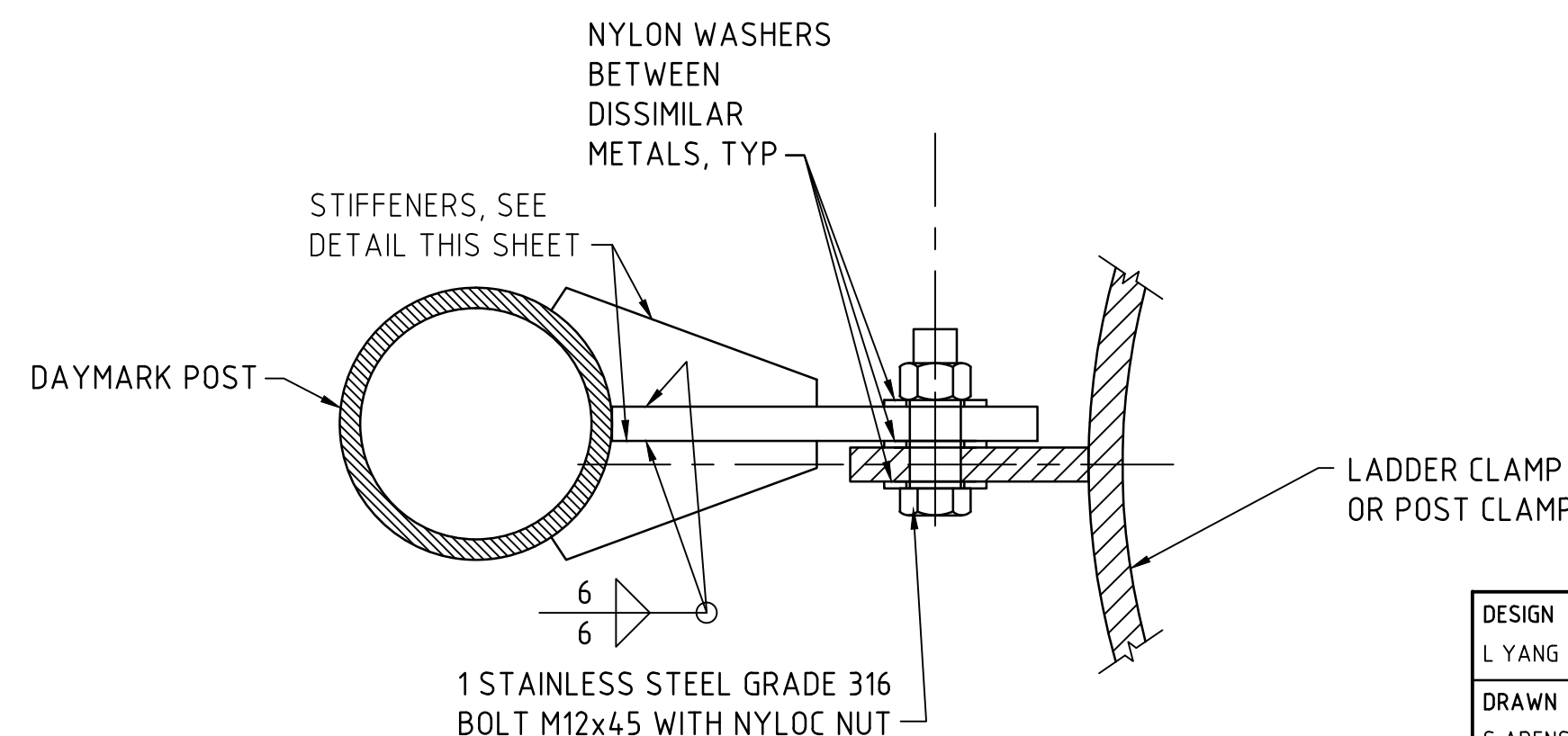
△ LADDER CLAMP
SCALE 1:5
1 REQUIRED PER PILE



△△ SECTION 1
SCALE 1:10



△△ SECTION 2
SCALE 1:10



△△ DETAIL A
SCALE 1:2

△△ NOTES

GENERAL

1. QUANTITIES SHOWN ARE FOR ONE ASSEMBLY.
2. POLY SLEEVES DRIVEN TO A DEPTH NOT LESS THAN 0.5m INTO SEA BED.
3. CIRCULAR HOLLOW SECTIONS SHALL BE GRADE C350L0 IN ACCORDANCE WITH AS1163 UNLESS SHOWN OTHERWISE.
4. NYLON WASHERS AND NYLOC NUTS TO BE USED BETWEEN DISSIMILAR METALS WHERE APPLICABLE (UNLESS NOTED OTHERWISE).

CLAMP

1. HOT ROLLED SECTION TO COMPLY WITH AS3679.1
2. CLAMP TO BE ABRASIVE GRIT BLASTED TO AS1627.4 CLASS 2.5 AND COATED BLACK WITH JOTUN JOTAZONE, INTERNATIONAL INTERZONE 954, WATTYL TCP COMPOUND OR AMERON AMERCOAT CC703/2 TO A MIN. THICKNESS OF 750µm.

POLY SLEEVE TO PILE CONNECTION

1. DRILL A Ø10.5 HOLE THROUGH POLY SLEEVE INTO STEEL 150mm DOWN FROM THE TOP OF PILE.
2. TAP A 12mm THREAD INTO STEEL PILE.
3. SCREW IN M12x50 (316 GRADE) STAINLESS STEEL BOLTS WITH FLAT WASHERS.
4. SEAL SCREW AND WASHER WITH SILICON BEFORE AND AFTER INSERTION OF BOLTS.

CLEAT PLs & STIFFENERS ADDED TO POST, POST 17/3/17 SCA G. UYTENHOVE GORDON PANTON 29/3/17

WASHERS/NUTS, DETAIL ADDED, CLAMP CLEAT SIZE	26/2/16	SCA	G. UYTENHOVE	C. TRIANTAFILLOU	13/7/16
DAYMARK LOWERED AND PILE CONN. BOLTS ADDED,	25/11/09	SCA	G. UYTENHOVE	S. DIMAS	23/12/09
BIRD SPIKES ADDED	30/06/09	PRG	G. UYTENHOVE	S. DIMAS	01/07/09
CLAMP CHANGED					
NOTES CHANGED					

DESCRIPTION	No.	Date	Resp	Examined	Approved for Exec Director	Date
AMENDMENTS						

100 MILLIMETRES ON ORIGINAL DRAWING

ALL DIMENSIONS ARE IN MILLIMETRES UNLESS SHOWN OTHERWISE

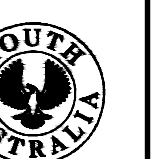
DESIGN L. YANG	ENDORSED
DRAWN S. ARENS/P. R. GUNN	
CHECKED G. UYTENHOVE	APPROVED S. DIMAS for Executive Director Date: 22/4/2009
EXAMINED M. COONEY Unit Head	CONSTRUCTED
ENDORSED S. DIMAS Manager, Marine Facilities	Title: Date:

STANDARD DRAWING
MARINE NAVIGATION AIDS

MINOR CHANNEL MARKER ASSEMBLIES

AMEND 4 SHEET 1 DRG S - 6977

DEPARTMENT
for
TRANSPORT, ENERGY
and INFRASTRUCTURE



PAVEMENTS and
STRUCTURES SECTION